

CORSA[®]
PERFORMANCE

2021+ RAM 1500
TRX 6.2L



IMPORTANT! WARRANTY AND INSTALLATION INSTRUCTIONS

Please Forward All Information to Consumer

Be sure to review the enclosed instructions prior to beginning the installation process. If you have any questions about the enclosed parts or instructions, or if you encounter a problem during installation:

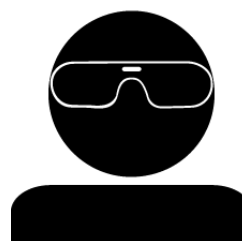
CALL TECHNICAL SUPPORT: 440.891.0999 or 800.486.0999

**TO ACTIVATE YOUR WARRANTY GO TO:
[CORSAPERFORMANCE.COM/WARRANTY](https://www.corsaperformance.com/warranty)**

COLOR INSTRUCTIONS ARE AVAILABLE BY PART NUMBER ON: [CORSAPERFORMANCE.COM](https://www.corsaperformance.com)



NEVER work on a hot exhaust system.
Allow time for the vehicle to cool.



**Always wear eye protection
when working under a vehicle.**

INSTALL DIFFICULTY 

RECOMMENDED TOOLS & SUPPLIES

- 3/8" Drive Ratchet
- 3/8" Drive 15mm Deep Socket
- Torque Wrench
- 15mm Wrench (2)
- Safety Glasses
- Grommet Pullers
- Black Marker
- 3/8" Drive 13mm Deep Socket
- 3/8" Drive 16mm Deep Socket
- Chain Style Pipe Cutter
- 16mm Wrench
- Soapy Water Solution
- File or Deburring Device
- Tape Measure

PLEASE READ THESE INSTRUCTIONS BEFORE INSTALLATION.

CORSA recommends that the installation of this system be performed by a qualified service center or professional installer who has the necessary equipment, tools, and experienced personnel. However, if you decide to perform this installation yourself, the use of an additional person may be required.

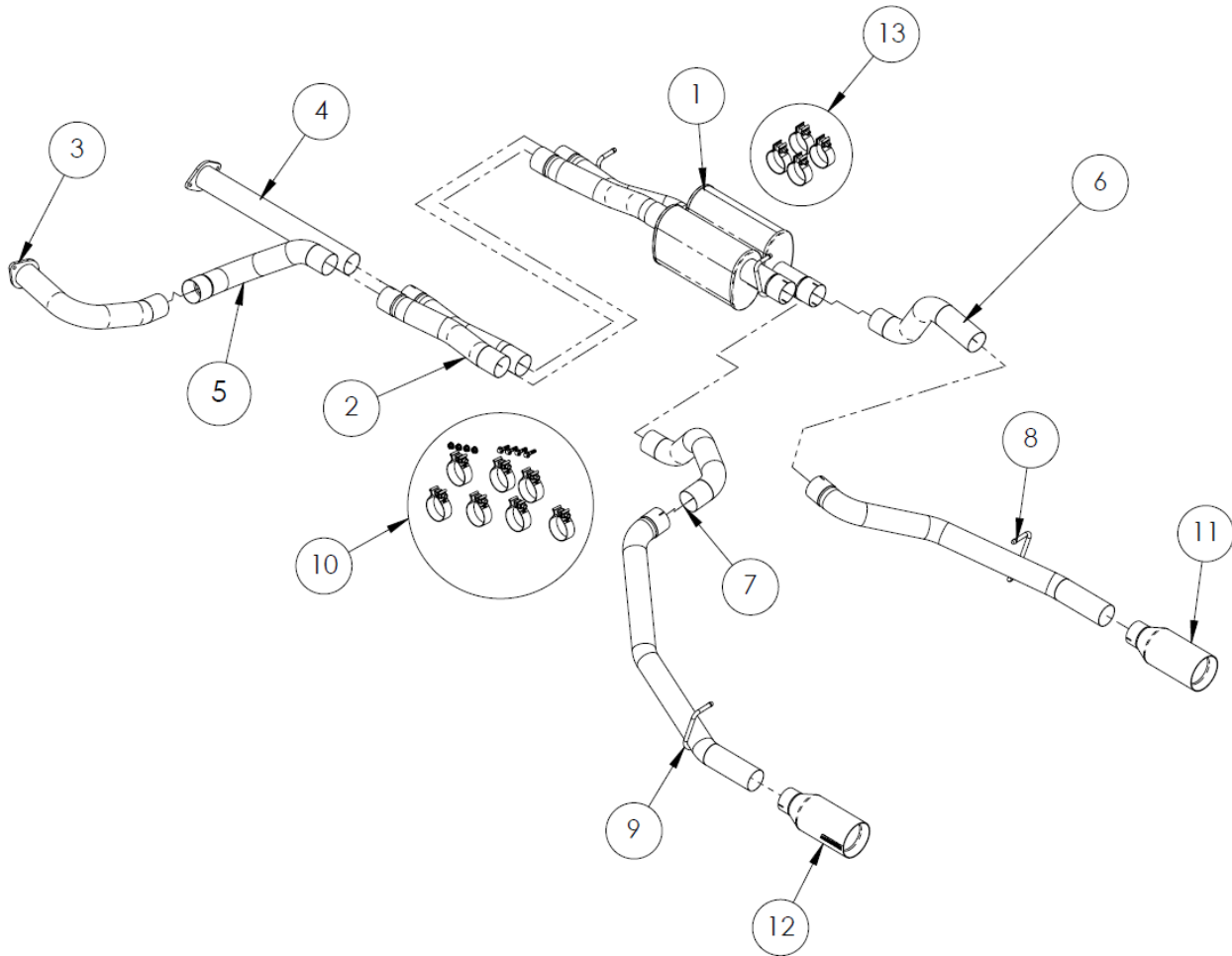
WARNING: Never work on a hot exhaust system. Allow time for the vehicle to cool. Always wear eye protection when working under a vehicle.

This warranty does not extend to damaged or defect in the finish of a product or to any product, that in the opinion of CORSA Performance, has been misused, damaged by accident or negligence, altered or modified in any way, faulty installation, or installed contrary to CORSA installation instructions, or repaired by an unauthorized service facility. Full warranty available on www.corsaperformance.com

CAUTION: Never work on a hot exhaust system. Allow the vehicle to cool for at least an hour and a half. Always wear eye protection when working under a vehicle. It is recommended to use cotton gloves in order to protect stainless steel surfaces from permanent grease and oil stains.

Please confirm that all parts are present according to the bill of materials before beginning the installation.

If something is missing call Tech Support at 440.891.0999 or Toll Free: 1.800.486.0999

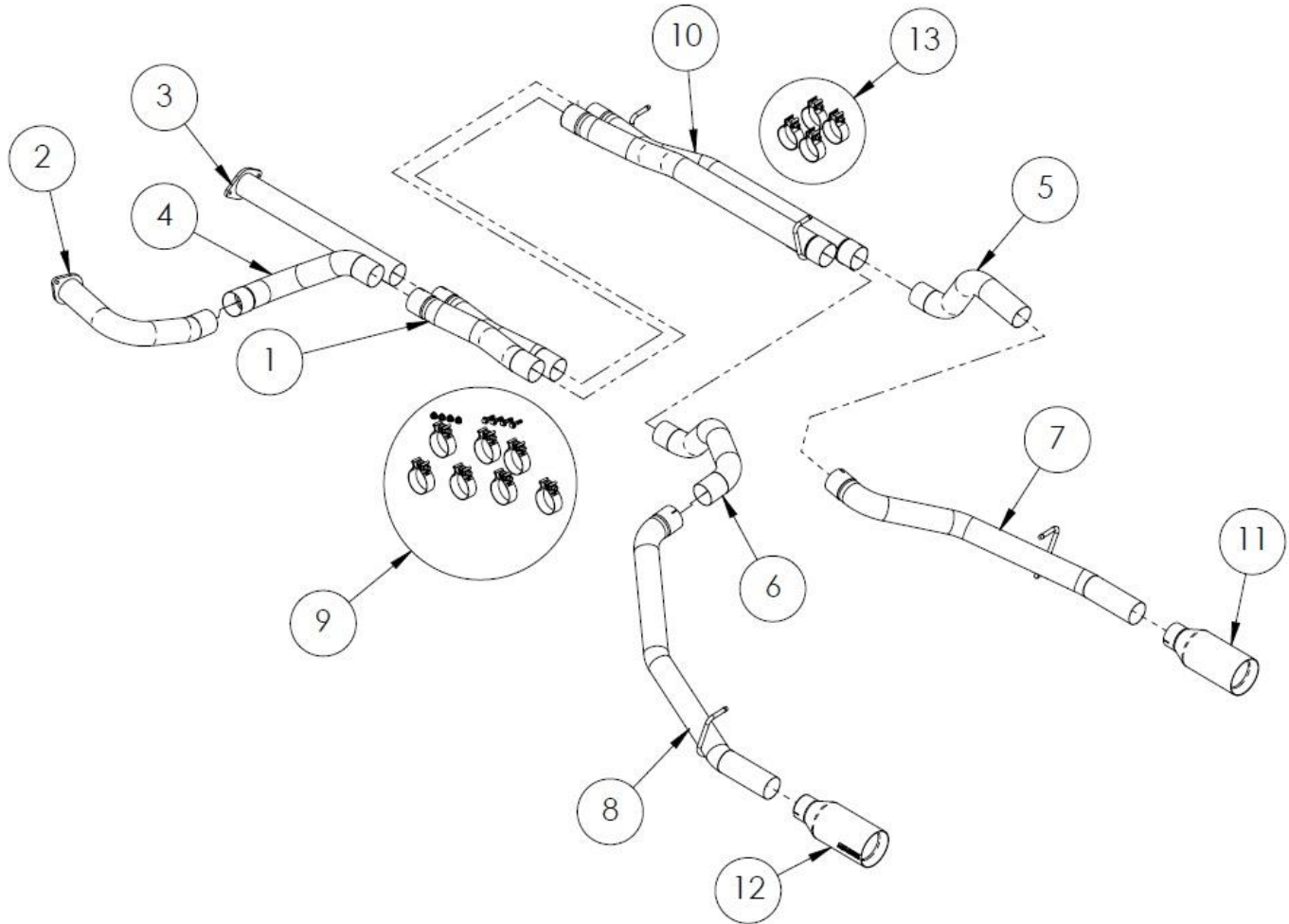


RAM TRX CAT BACK EXHAUST WITH CORSA MUFFLER BILL OF MATERIALS – 21189

1.	Muffler Assembly (18DR2034)	2.	Front Crossover Assembly (18DR4172)
3.	Driver Side Head Pipe Assembly (18DR4174)	4.	Passenger Side Head Pipe Assembly (18DR4175)
5.	Connector Pipe (18DR4178)	6.	Passenger Side Front Tailpipe (18DR4181)
7.	Driver Side Front Tailpipe (18DR4182)	8.	Passenger Side Rear Tailpipe Assembly (18DR4183)
9.	Driver Side Tailpipe Assembly (18DR4184)	10.	Hardware Kit For Pipes (18DR7079)
11.	5.0" Passenger Side Tip (20FF3008)	12.	5.0" Driver Side Tip (20FF3009)
13.	Hardware Kit for Muffler/Muffler Delete (20MU7074)		

Please confirm that all parts are present according to the bill of materials before beginning the installation.

If something is missing call Tech Support at 440.891.099 or Toll Free: 1.800.486.0999

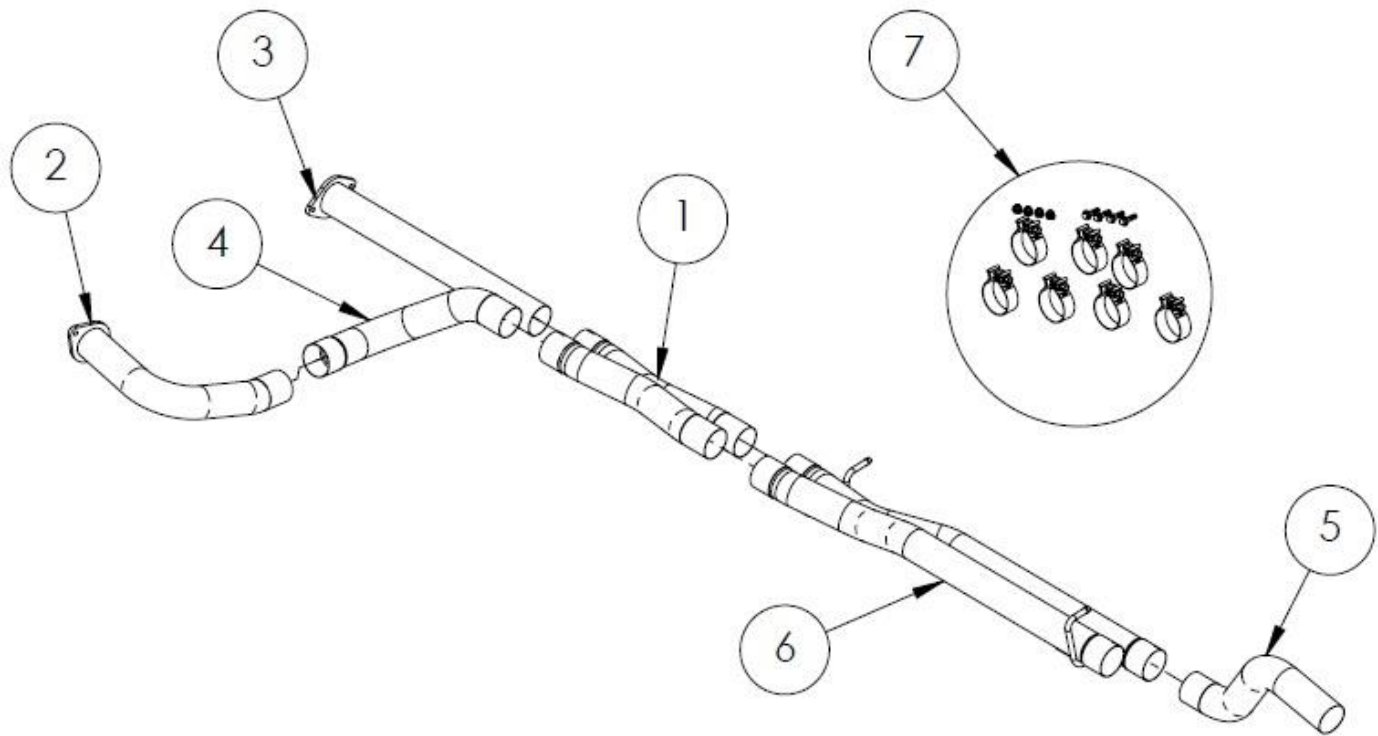


RAM TRX BAJA MUFFLER DELETE CAT BACK EXHAUST BILL OF MATERIALS – 21190

1.	Front Crossover Assembly (18DR4172)	2.	Driver Side Head Pipe Assembly (18DR4174)
3.	Passenger Side Head Pipe Assembly (18DR4175)	4.	Connector Pipe (18DR4178)
5.	Passenger Side Front Tailpipe (18DR4181)	6.	Driver Side Front Tailpipe (18DR4182)
7.	Passenger Side Rear Tailpipe Assembly (18DR4183)	8.	Driver Side Tailpipe Assembly (18DR4184)
9.	Hardware Kit For Pipes (18DR7079)	10.	Muffler Delete Assembly (18DR4192)
11.	5.0" Passenger Side Tip (20FF3008)	12.	5.0" Driver Side Tip (20FF3009)
13.	Hardware Kit for Muffler/Muffler Delete (20MU7074)		

Please confirm that all parts are present according to the bill of materials before beginning the installation.

If something is missing call Tech Support at 440.891.099 or Toll Free: 1.800.486.0999



**RAM TRX EXHAUST – BAJA MUFFLER DELETE CENTER SECTION
BILL OF MATERIALS – 21194**

1.	Front Crossover Assembly (18DR4172)	2.	Driver Side Head Pipe Assembly (18DR4174)
3.	Passenger Side Head Pipe Assembly (18DR4175)	4.	Connector Pipe (18DR4178)
5.	Passenger Side Front Tailpipe (18DR4181)	6.	Muffler Delete Assembly (18DR4192)
7.	Hardware Kit For Pipes (18DR7079)		

NOTE: The factory exhaust requires a cut just behind the inner most factory muffler, on the pipe closest to the driveshaft, to remove the driver side tailpipe from the vehicle. The cut location is critical for the Baja center section version of the CORSA exhaust to fit properly, as it reuses the factory tailpipes and tips.

REMOVAL INSTRUCTIONS

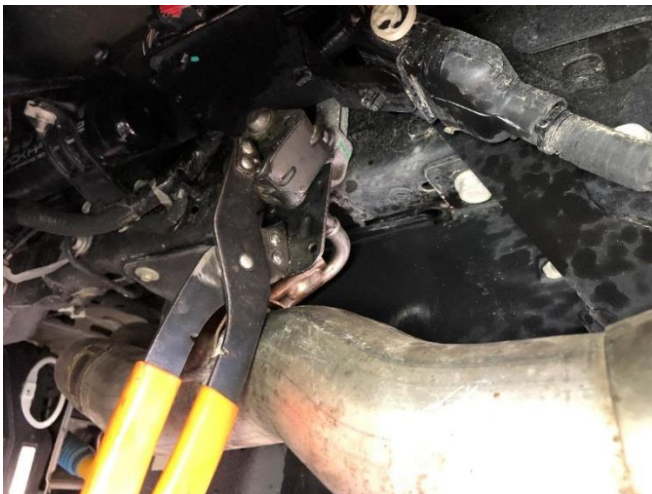
FACTORY EXHAUST



1. Identify the inner most factory muffler, closest to the driveshaft, located just in front of the rear differential on the passenger side of vehicle. Using a tape measure and a black marker, measure 1 3/4" off the rearward facing bottom edge of the muffler, then mark the pipe. This is the **CUT LINE**.



2. Using a chain cutter or similar device, cut the pipe on the **CUT LINE**, just behind the inner most factory muffler. **NOTE:** Carefully and thoroughly deburr the cut location on the driver side factory tailpipe. This step is critical for the Baja center section version of the CORSA exhaust to fit properly, as it reuses the factory tailpipes and tips.



3. Using grommet pullers or similar device, remove the driver side tailpipe hanger from the grommet, then carefully remove the driver side tailpipe from the vehicle. **NOTE:** The use of soapy water solution will aid in the removal and later installation of the hangers from the factory grommets.



4. Using a 15mm socket and 3/8" ratchet, loosen the factory clamp securing the passenger side tailpipe.

Continued on Next Page ...

REMOVAL INSTRUCTIONS

FACTORY EXHAUST



- 5.** Using grommet pullers or similar device, remove the passenger side tailpipe hanger from the grommet.



- 6.** Carefully remove the passenger side tailpipe from the vehicle.



- 7.** Using a 15mm socket and 3/8" ratchet, loosen the outer factory clamp securing the stock muffler section to the factory "Y" pipe.



- 8.** Using a 15mm socket and 3/8" ratchet, loosen the inner factory clamp securing the stock muffler section to the factory "Y" pipe.

Continued on Next Page ...

REMOVAL INSTRUCTIONS

FACTORY EXHAUST



- 9.** Using grommet pullers or similar device, remove the front muffler hanger from the grommet.
IMPORTANT NOTE: At this time, support the underside of both the factory "Y" pipe and muffler section using adjustable support stands (or equivalent), as the entire stock exhaust will be free to drop down once the rear muffler hanger mount is unbolted from the chassis in the following step. A second person may be needed to assist with this step.



- 10.** Remove the two nuts securing the rear muffler hanger mount using a 13mm socket and 3/8" ratchet. Set aside the two nuts to be reused during **INSTALL STEP 8**.



- 11.** Carefully remove the factory muffler section by sliding it rearward to free it from the "Y" pipe, then moving it down and forward to free it from the vehicle.



- 12.** With factory muffler section on the ground, use grommet pullers or similar device to remove the rear muffler hanger from the grommet. Note the orientation of the hanger grommet before removal. Set aside the rear muffler hanger mount to be reused during **INSTALL STEP 5**.

Continued on Next Page ...

NOTE: The driver side skid plate must be removed to allow access to the driver side flange location that secures the factory "Y" pipe.

REMOVAL INSTRUCTIONS

FACTORY EXHAUST



13. Locate the driver side skid plate behind the driver side catalytic converter. Remove the two bolts securing the side of the skid plate using a 16mm socket and 3/8" ratchet.



14. Remove the three bolts securing the underside of the skid plate using a 16mm socket and 3/8" ratchet. Slide the skid plate rearward and then move it down to free it from the vehicle. Set aside the skid plate and mounting hardware to be reused during **INSTALL STEP 29**.



15. Remove the two bolts securing the passenger side "Y" pipe flange using a 16mm wrench.



16. Remove the two bolts securing the driver side "Y" pipe flange using a 16mm wrench. The factory bolts securing the flanges will not be reused.

Continued on Next Page ...

REMOVAL INSTRUCTIONS

FACTORY EXHAUST



17. Carefully remove the "Y" pipe section by sliding it rearwards and then down and forward to free it from the vehicle.



18. With the factory "Y" pipe section on the ground, remove both factory metal exhaust gaskets from the flange locations.



19. Install one of the factory exhaust flange gaskets as shown onto the passenger side factory flange on the outlet of the catalytic converter pipe, which is on the opposite side of the flange connection from the factory "Y" pipe.



20. Repeat Step 19 for the driver side of the vehicle.

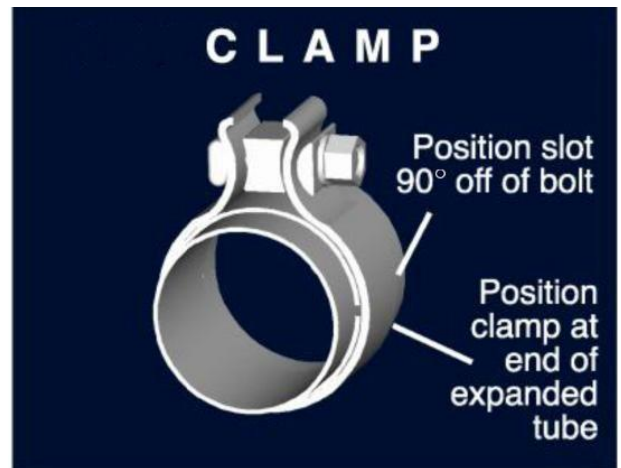
This concludes the removal of the factory exhaust.

WARNING! DO NOT SKIP THIS STEP!

It is recommended to apply the anti-seize lubricant to the threads **ONLY** of the clamps and flange bolts. Failure to follow this procedure can cause nuts to seize on clamps and potentially destroy threads.

After applying anti-seize lubricant, be sure to **thoroughly** clean your hands, as lubricant will tarnish stainless steel.

All clamps should be tightened using a properly calibrated Torque Wrench. Using an air impact gun will damage the clamp and reduce its ability to effectively seal the joint. It may also cause the joint to separate, thereby causing damage to your exhaust system and to your vehicle.



NOTE: Align all clamps so that the center of the clamp bolt is 90 degrees from the notch in the pipe.

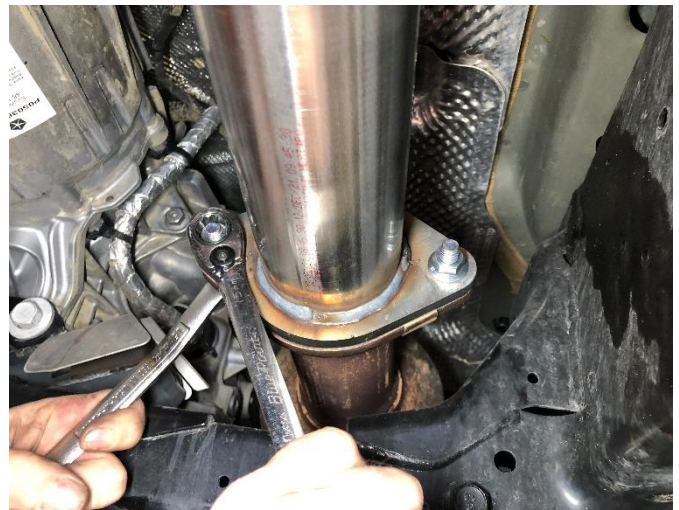
INSTALLATION INSTRUCTIONS

CORSA EXHAUST

NOTE: Begin with **Install Steps 1-10** for all versions of the CORSA exhaust system. **Install Steps 11-19** are for the **full cat back versions only** of the CORSA exhaust installation that include dual rear tailpipes and tips. **Install Steps 20-25** are for the **Baja Center Section versions only** of the CORSA exhaust installation that reuse stock tailpipes and tips.



1. Locate the CORSA driver side head pipe assembly, and two each of the supplied M10 mounting bolts and nuts from the hardware kit. Install the driver side head pipe onto the flange from the driver side catalytic converter as shown and secure the flange with the M10 flange bolts and nuts, using two 15mm wrenches.



2. Locate the CORSA passenger side head pipe assembly, and the rest of the supplied M10 mounting bolts and nuts for the hardware kit. Install the passenger side head pipe onto the flange from the passenger side catalytic converter as shown and secure the flange with the M10 flange bolts and nuts, using two 15mm wrenches.

Continued on Next Page ...

INSTALLATION INSTRUCTIONS

CORSA EXHAUST



- 3.** Locate the CORSA connector pipe and a 3.0" clamp. Position the 3.0" clamp onto the inlet of the connector pipe with the clamp hardware on the rear side of the pipe and the clamp nut facing down. Insert the connector pipe inlet onto the driver side head pipe outlet as shown, making sure to have at least 1.75" of overlap at the slip fit connection, then snug the clamp using a 15mm socket and 3/8" ratchet, leaving it loose enough for later adjustment.



- 4.** Locate the CORSA front crossover assembly and two 3.0" clamps. Position the 3.0" clamps onto the crossover inlet with the clamp hardware on the outside of each pipe, and the clamp nuts facing down. Insert the crossover onto the connector pipe and passenger head pipe outlets, making sure to have at least 1.75" of overlap at both slip fit connections, then snug the clamps using a 15mm socket and 3/8" ratchet, leaving them loose enough for later adjustment.



- 5.** Locate the CORSA muffler (or Baja muffler delete) assembly and the rear muffler hanger mount set aside in **REMOVAL STEP 10**. Insert the rear muffler hanger into the grommet as shown; note the orientation of the rear muffler hanger mount when the grommet is installed. Once again, the use of a soapy water solution will aid in the installation of the hangers into the factory grommets.



- 6.** Locate two 3.0" clamps. Position both clamps onto the outlet of the front crossover assembly, such that both clamp nuts will be facing inwards below the piping (outwards when rotated above the piping) as shown. Insert the CORSA rear muffler (or Baja muffler delete) inlet onto the front crossover outlet; making sure to have at least 1.75" of overlap at both slip fit connections.

Continued on Next Page . . .

INSTALLATION INSTRUCTIONS

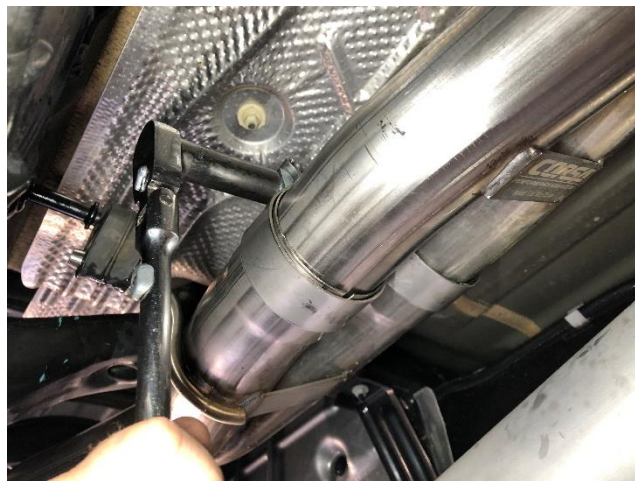
CORSA EXHAUST



- 7.** Insert the front muffler/muffler delete hanger into the front exhaust grommet as shown.



- 8.** Locate the two nuts set aside in **REMOVAL STEP 10**. Reinstall the rear muffler hanger mount onto the two studs on the vehicle chassis in the factory location using the retained factory hardware. Tighten the two nuts using a 13mm socket and 3/8" ratchet.



- 9.** Snug the outer clamp at the muffler/muffler delete slip fit connection using a 15mm socket and ratchet, leaving it loose enough for later adjustment.



- 10.** Snug the inner clamp at the muffler/muffler delete slip fit connection using a 15mm socket and ratchet. Leaving it loose enough for later adjustment.

NOTE: Continue with **Install Steps 11-19** for the **full cat back versions only** of the CORSA exhaust installation, that include dual rear tailpipes and 5" tips. **Install Steps 20-25** are for the **Baja Center Section versions only** of the CORSA exhaust installation, that reuse stock tailpipes and tips. Continue with **Step 26** for all versions of the Corsa exhaust installation.

Continued on Next Page ...

INSTALLATION INSTRUCTIONS

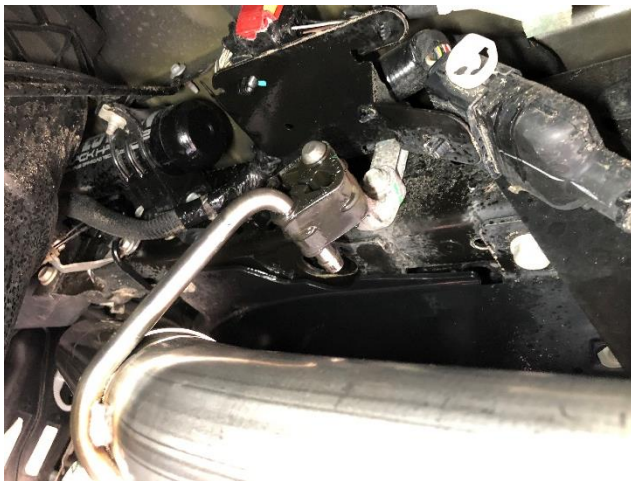
CORSA EXHAUST



- 11.** Locate the CORSA driver front tailpipe and a 3.0" clamp. Position the 3.0" clamp onto the outlet of the muffler/muffler delete with the clamp hardware facing away from the driveshaft and the clamp nut facing down. Insert the tailpipe inlet into the muffler outlet, making sure to have at least 1.75" of overlap at the slip fit connection, then snug the clamp using a 15mm socket and 3/8" ratchet, leaving it loose enough for later adjustment.



- 12.** Locate the CORSA passenger front tailpipe and a 3.0" clamp. Position the 3.0" clamp onto the outlet of the muffler/muffler delete with the clamp hardware on the outer side (away from driveshaft) of the pipe and the clamp nut facing down. Insert the tailpipe inlet into the muffler outlet, making sure to have at least 1.75" of overlap at the slip fit connection, then snug the clamp using a 15mm socket and 3/8" ratchet, leaving it loose enough for later adjustment.



- 13.** Locate the CORSA driver rear tailpipe assembly and a 3.0" clamp. Position the 3.0" clamp onto the tailpipe inlet with the clamp hardware on the front side of the pipe, and the clamp nut facing down. Insert the driver rear tailpipe hanger into the exhaust grommet as shown.



- 14.** Insert the driver rear tailpipe inlet onto the driver front tailpipe outlet as shown, making sure to have at least 1.75" of overlap at the slip fit connection, then snug the clamp using a 15mm socket and 3/8" ratchet, leaving it loose enough for later adjustment.

Continued on Next Page . . .

INSTALLATION INSTRUCTIONS

CORSA EXHAUST



- 15.** Locate the CORSA passenger rear tailpipe assembly and a 3.0" clamp. Position the 3.0" clamp onto the tailpipe inlet with the clamp hardware on the inside of the pipe, and the clamp nut facing down. Insert the passenger rear tailpipe hanger into the exhaust grommet as shown



- 16.** Insert the passenger rear tailpipe inlet through the chassis, and onto the passenger front tailpipe outlet as shown, making sure to have at least 1.75" of overlap at the slip fit connection, then snug the clamp using a 15mm socket and 3/8" ratchet, leaving it loose enough for later adjustment.



- 17.** Locate both CORSA tip assemblies, and two 3.0" clamps. Identify the driver and passenger side tips by the CORSA etch location; the CORSA logo will face outwards and be upright on each side of the vehicle. Hold the driver side tip with the logo facing outwards, and slide a clamp onto the tip inlet, such that the clamp hardware sits to the top of the tip, and the clamp nut is facing outwards. Carefully install the CORSA driver exhaust tip onto the driver side tailpipe outlet.



- 18.** Extend the bed step to allow access to the clamp location on the tip inlet. Adjust the position and rotation of the tip to center the logo on the outer side of the tip, with the desired amount of tip reveal, making sure to have at least 1.75" of overlap at the slip fit connection. Secure the tip using a 15mm socket and ratchet, leaving it loose enough for later adjustment.

Continued on Next Page . . .

INSTALLATION INSTRUCTIONS

CORSA EXHAUST



- 19.** Hold the passenger side tip with the logo facing outwards, and slide a clamp onto the tip inlet, such that the clamp hardware sits to the top of the tip, and the clamp nut is facing outwards. Carefully install the CORSA passenger exhaust tip onto the passenger side tailpipe outlet. Adjust the position and rotation of the tip to center the logo on the outer side of the tip, with the desired amount of tip reveal, making sure to have at least 1.75" of overlap at the slip fit connection. Secure the tip using a 15mm socket and ratchet, leaving it loose enough for later adjustment.

NOTE: Follow **Install Steps 20-25** for the **Baja Center Section versions only** of the CORSA exhaust installation, that reuse stock tailpipes and tips. Continue with **Step 26** for all versions of the Corsa exhaust installation.

Continued on Next Page . . .

INSTALLATION INSTRUCTIONS

CORSA EXHAUST



20. Locate the cut factory driver side tailpipe and a 3.0" clamp. Position the 3.0" clamp onto the outlet of the muffler/muffler delete with the clamp hardware on the outer side (away from driveshaft) of the pipe and the clamp nut facing down. Insert the cut factory tailpipe into the driver side muffler/muffler delete outlet as shown, with 1.75" of overlap at the slip fit connection.



21. Insert the factory driver side tailpipe hanger into the exhaust grommet as shown.



22. Locate the CORSA passenger front tailpipe and a 3.0" clamp. Position the 3.0" clamp onto the outlet of the muffler/muffler delete with the clamp hardware on the outer side (away from driveshaft) of the pipe and the clamp nut facing down. Insert the tailpipe inlet into the muffler outlet, making sure to have at least 1.75" of overlap at the slip fit connection, then snug the clamp using a 15mm socket and 3/8" ratchet, leaving it loose enough for later adjustment.



23. Locate the factory passenger side tailpipe. Insert the factory passenger tailpipe inlet through the chassis, and onto the CORSA passenger front tailpipe outlet as shown, making sure to have at least 1.75" overlap at the slip fit connection. Insert the factory passenger side tailpipe hanger into the exhaust grommet as shown.

Continued on Next Page . . .

INSTALLATION INSTRUCTIONS

CORSA EXHAUST



24. Snug the clamp at the slip fit connection of the factory passenger tailpipe inlet using a 15mm socket and 3/8" ratchet, leaving it loose enough for later adjustment.



25. Snug the clamps at both slip fit connections from the muffler/muffler delete outlet using a 15mm socket and 3/8" ratchet, leaving them loose enough for later adjustment.

- 26.** At this time, visually inspect the exhaust system position, tip alignment, clamp orientation, and exhaust pipe clearance. Make any necessary adjustments at the slip fit joints and flange connections.
- 27.** Torque all supplied flange mounting hardware to 22 ft-lbs. at the two flange connections.
- 28.** With the tips held in the desired location, start at the front of the vehicle, and tighten the nuts on the clamps. Torque all clamp nuts to 45 ft-lbs. (61 N-m) on the 3.0" clamps.
- 29.** Locate the driver side skid plate and mounting hardware set aside in **REMOVAL STEP 14**. Reinstall the driver side skid plate. Installation is the reverse of removal. Torque bolts to factory specifications. Installation complete.

NOTE: During cold weather start-ups, you may experience an exhaust sound that is deeper and louder in tone than usual. This is temporary and will diminish to normal levels once your engine has reached its normal operating temperature.

NOTE: Immediately following the installation of your exhaust system, you may experience a trace of smoke after initial start-up. DO NOT be alarmed. The smoke is caused by the burning of a small amount of forming oil residue used in the manufacturing process.

NOTE: It is strongly suggested that all clamps be checked and tightened after road testing the vehicle once the system has cooled.