



## HP TUNER MPVI-2 INSTALLATION MANUAL

2006 AND UP DCX VEHICLES

5.7, 6.1, 6.2, 6.4L

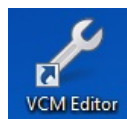
**NOTE: 2015 and UP vehicles** PCM's must be unlocked by HP Tuners before they can be flashed. Contact HP Tuners or go their website for more info. **2018 Vehicles require a security bypass to enable flashing (supplied with kit).** **Never use a SCT unlocked PCM with HP Tuner tool, this will brick the PCM.**

Before beginning installation, we encourage you to read this manual thoroughly before you begin any portion of the installation:

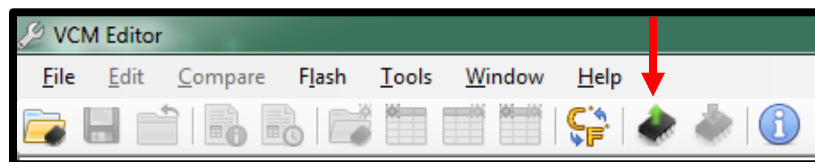
1. Making any changes to the calibration is strictly prohibited. Any change will void all warranties and will make the vehicle non-emissions legal.
2. **Whipple calibrations are for stock engines, changes such as long tubes, cold air intakes, cams and big throttle bodies are not supported. Changes such as these will require custom tuning.**
3. Having the latest OEM PCM and TCM calibration is highly recommended to eliminate potential OEM issues in calibration.
4. IT IS THE RESPONSIBILITY OF THE INSTALLER AND/OR USER OF THIS PRODUCT TO ENSURE THAT IT IS USED IN COMPLIANCE WITH ALL APPLICABLE LAWS AND REGULATIONS.

If you're a new customer & just received your HP Tuner MPVI2 hardware/software package in the mail, go to the HP Tuner download website: <https://www.hptuners.com/downloads/>. Download the latest VCM Suite (Beta will also work and is preferred). If you run into any issues installing the software, email [support@hptuners.com](mailto:support@hptuners.com) for resolution.

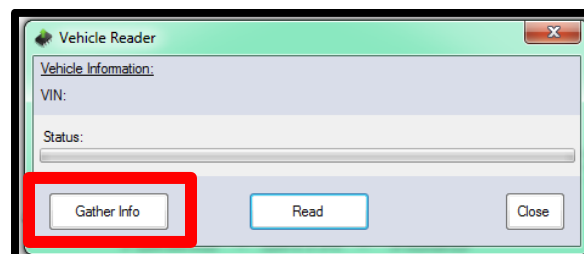
1. Connect to vehicle, turn key to engine run (do not start engine), push button type ignitions, hold push button down for 10 seconds to activate diagnostic mode. Open VCM Editor.



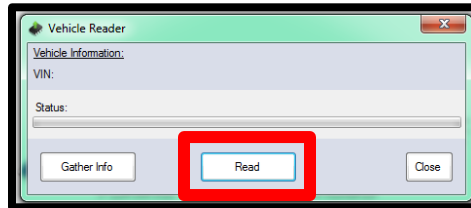
2. With the vehicle on, engine not running, click the green arrow icon to READ the file in the PCM.



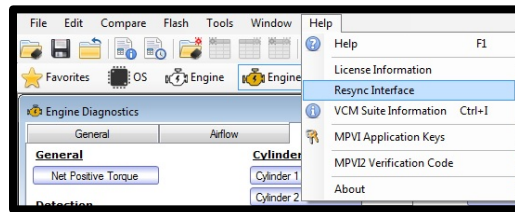
3. Click the "Gather Info" icon to populate the PCM data.



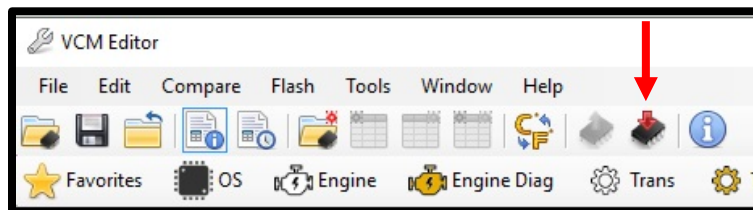
- Once the info is self-gathered by HP Tuners for PCM and TCM, click the "Read" icon. If it doesn't auto populate, you will have to toggle the correct PCM or TCM for it to read. Once the file is uploaded, save this file in an easy to find location (example: mydocuments/HP Tuners/cals and logs). Create a file name with VIN number, Customer name and engine size. Example: **2C3CDXCT1FH737913\_John Smith\_6.4L\_Stock**. If you want to keep the file name shorter, use only the last 4 digits of the VIN but keep the same information. We will supply a similar name but with SC in the file to help distinguish between them. **NOTE:** Always keep the stock file. If you are a dealer/installer, email the file to the customer or install on the HP Tuner thumb drive supplied. Whipple does not store stock files.



- Go to the Whipple website and go to calibration request tab, or follow the link: [Whipple Superchargers Calibration Request](#). Calibrations may take 1-2 business days to build your unique calibration so this is important to do **BEFORE** you start the supercharger installation. Each calibration is locked to the supplied HP Tuner serial #. **NOTE: Whipple builds the files and locks them to the supplied HP Tuner tool. If you are using a different tool, you must notify Whipple, if not, your calibration will not open in your software.**
- Once calibration is supplied, save to your PC in the same location as the stock file. Open VCM Editor. Go to the help tab, with internet access and the MPV12 connected to PC, click **RESYNC INTERFACE** which will add credits to the tool.



- Open the calibration by clicking file, connect to vehicle, turn key to engine run (do not start engine), push button type ignitions, hold push button down for 10 seconds to activate diagnostic mode. Click the red arrow icon (WRITE VEHICLE) to write the new calibration to the vehicle.



- Once the vehicle is flashed, turn key off for 10 seconds (follow on screen instructions). The vehicle is now ready to start and operate.
- HP Tuners supplies a free data logging program, VCM Scanner. If required, you may use this for diagnostic purposes. Whipple has pre-made channel list for proper data logging. If logging, please request a data log channel list from [support@whipplesuperchargers.com](mailto:support@whipplesuperchargers.com). To change tire/axle size, open VCM scanner, click the green "power icon" (vehicle controls and special functions) and use the on-screen menu to change. If nothing shows, its not available for that vehicle.
- NEVER MAKE CHANGES TO THE CALIBRATION.** The calibration is designed and tested by Whipple Superchargers. Any change will void any and all warranties, along with emissions compatibility.