

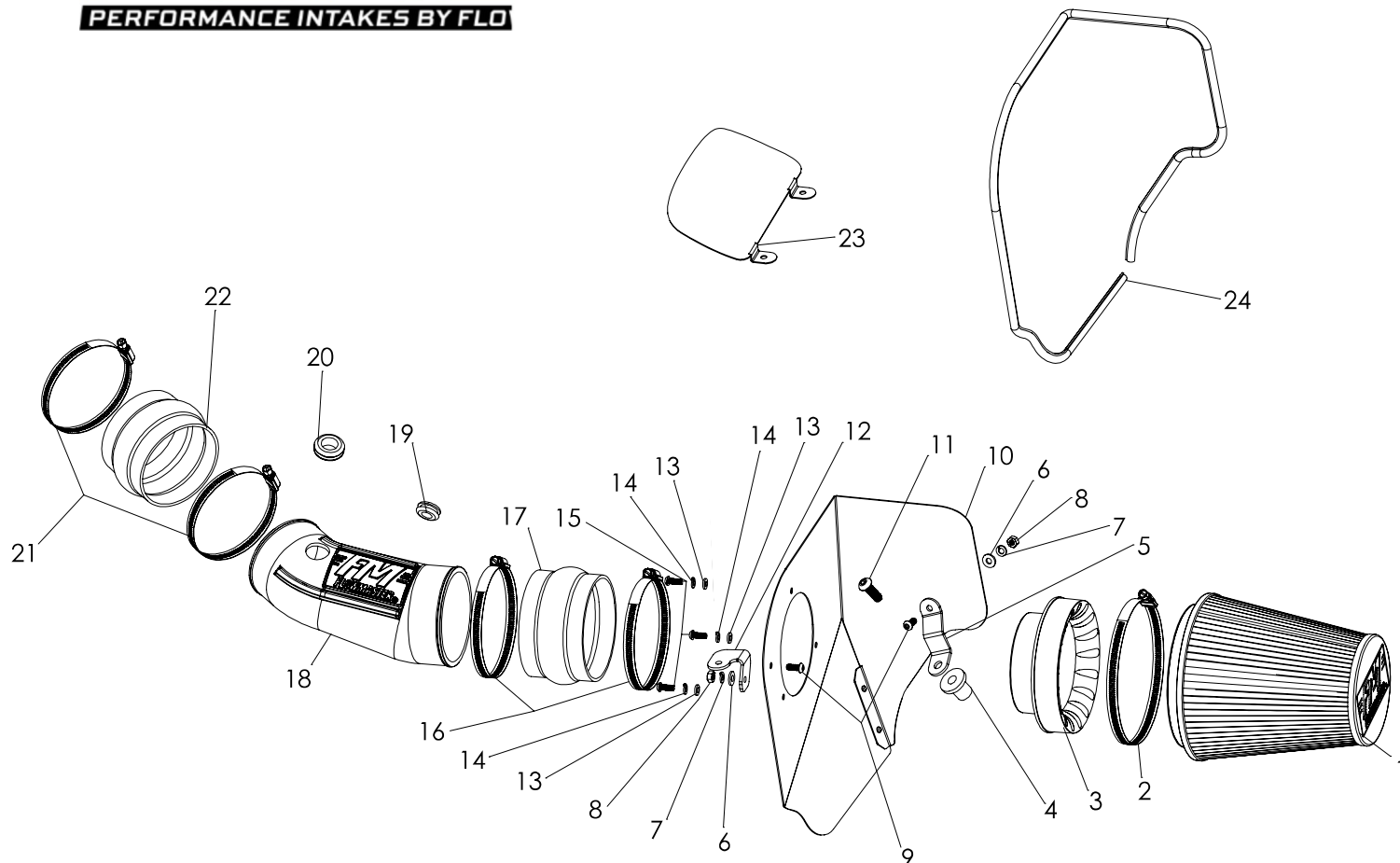


## Installation Instructions

# 615139

## 2017-19 DODGE CHALLENGER / CHARGER HELLCAT 6.2L ENGINE

NOT LEGAL FOR SALE OR USE ON ANY POLLUTION-CONTROLLED MOTOR VEHICLE IN CALIFORNIA OR IN STATES THAT HAVE ADOPTED CALIFORNIA EMISSION PROCEDURES.



ITEM NO.	PART NUMBER	DESCRIPTION	QTY.
1	AF1001	AIR FILTER, 8-5/8" x 6" DIA	1
2		CLAMP, SCREW, #104 (4-1/8" - 7")	1
3	AF6003	ADAPTER, AIR FILTER 4-1/2" x 6"	1
4	HW119	WELL NUT, RUBBER, 3/8"-16	1
5	AF5017	BRACKET 2	1
6	HW320	FLAT WASHER, 1/4"	2
7	HW322	LOCK WASHER, 1/4"	2
8	HW115	NUT, 1/4"-20	2
9	HW245	SCREW, 1/4"-20 x 5/8"	2
10	AF3008	HEAT SHIELD	1
11	HW250	SCREW, 3/8"-16 x 1-1/4"	1
12	AF5016	BRACKET 1	1

ITEM NO.	PART NUMBER	DESCRIPTION	QTY.
13	HW319	FLAT WASHER, M6	3
14	HW318	LOCK WASHER, M6	3
15	HW244	SCREW, M6 x 1.0 x 16MM	3
16	MC450H	CLAMP, SCREW, #72 (3" - 5")	2
17	AF4021	COUPLER, FLEX 4-1/2" I.D. x 3" L	1
18	AF2008	INTAKE TUBE	1
19	AF4008	GROMMET, 1-1/16" OD x 1/2" ID x 3/16" THK	1
20	AF4045	GROMMET 1-3/8" OD x 3/4" ID x 3/16" THK	1
21	MC400H	CLAMP, SCREW, #64 (3-9/16" - 4-1/2")	2
22	AF4005	COUPLER, FLEX 4" I.D. x 3" L	1
23	AF5018	INTAKE BLOCK-OFF PLATE (CHALLENGER ONLY)	1
24	49000061	GASKET, HEAT SHIELD	54"

## REVIEW THE INSTRUCTIONS AND VERIFY THE KIT CONTENTS:

1. Please take a moment to read and understand these instructions before installing your Flowmaster performance air intake kit.



2. Use the parts drawing and list (front page) to verify your kit's contents.

In the unlikely event that any parts are missing, please contact FLOWMASTER Technical Support for replacements.

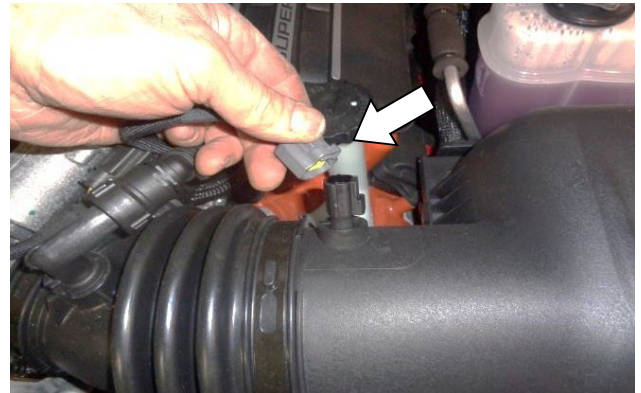
To simplify assembly and avoid cross-threading fasteners, identify and separate the 1/4-20 screws, item (9) (used with nuts (8)), and the M6 screws (15) (used with filter adapter (3)).

## REMOVE THE FACTORY AIR INTAKE SYSTEM:

### NOTES

- We highly recommend that you retain all factory air intake system parts.
- Please refer to vehicle manufacturer's recommendations regarding removal of factory components.
- Disconnecting the negative battery cable erases pre-programmed electronic memories. Write down all memory settings before disconnecting the negative battery cable. Some radios will require an anti-theft code to be entered after the battery is reconnected. The anti-theft code is typically supplied with your owner's manual. In the event your vehicle's anti-theft code cannot be recovered, contact an authorized dealership to obtain your vehicle's anti-theft code.

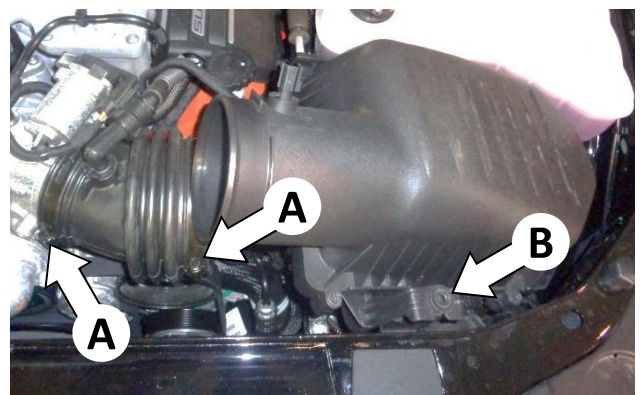
3. Turn off the vehicle's ignition and disconnect the negative battery cable. **Failure to disconnect the battery may cause the CHECK ENGINE light to illuminate after the air intake kit is installed.**



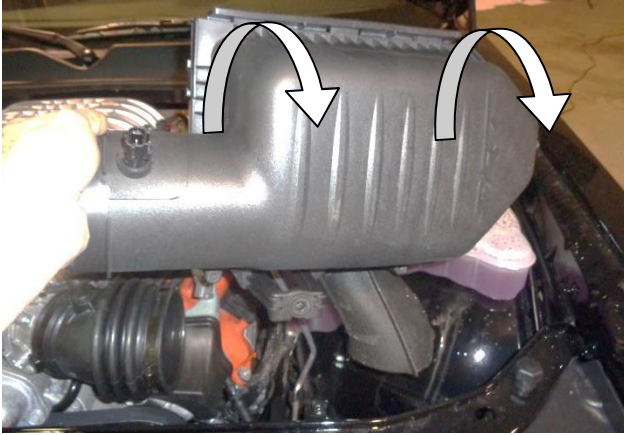
4. Disconnect the plug from the inlet air temperature sensor by depressing the locking tab and pulling the plug straight off.



5. Disconnect the crankcase vent hose from the air duct by pulling straight up while also rocking it around in an orbital motion. Spraying a rubber-safe lubricant around the opening will ease removal.



6. Loosen the hose clamps (A) at each end of the air duct, and separate the duct from the airbox. Then remove screw (B) securing the airbox to the vehicle frame, and retain screw for re-use later.



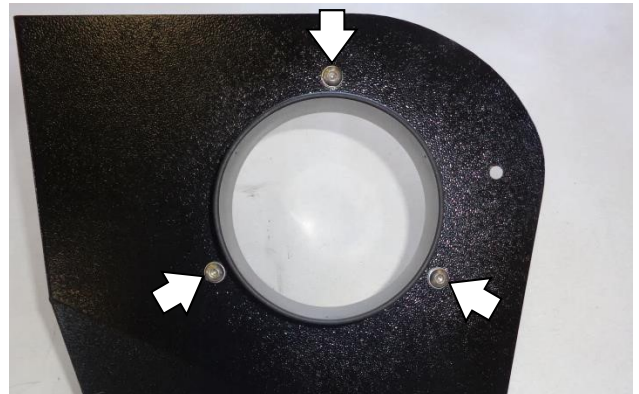
7. Remove the airbox by simultaneously lifting it up and rolling it forward. Then, remove the air duct from the throttle body.

**NOTE: We highly recommend that you retain all stock air intake system parts.**

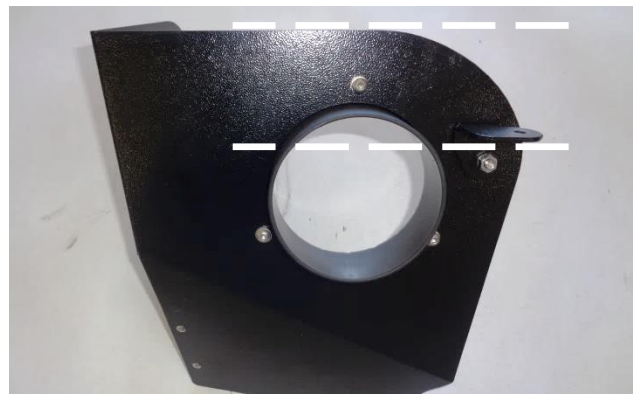


8. Remove the temp sensor from the airbox by gently lifting the locking tab outward with a flat screwdriver and rotating the sensor counter-clockwise. Remove o-ring from temp sensor and retain sensor for re-use.

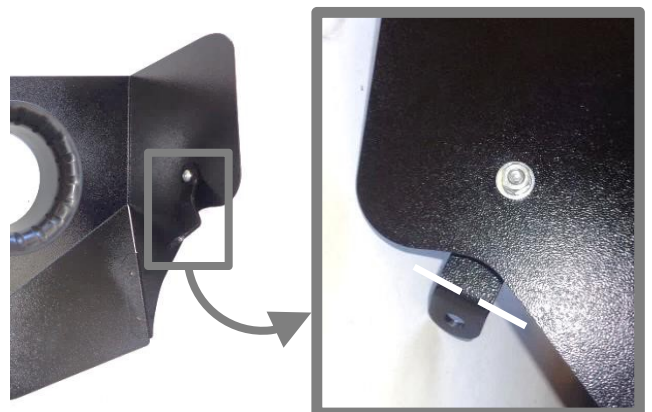
## ASSEMBLE AND INSTALL YOUR FLOWMASTER PERFORMANCE AIR INTAKE SYSTEM:



9. Assemble air filter adapter (3) to heat shield (10) using M6 screws (15), lock washers (14) and flat washers (13).



10. Attach bracket (12) to heat shield using ¼-20 screw (9) (against the heat shield), and flat washer (6), lock washer (7), and nut (8) (against the bracket). **NOTE: Align bracket so tab is approximately parallel to top edge of heat shield, as shown.**



11. Attach bracket (5) to heat shield using ¼-20 screw (9) (against the bracket), and flat washer (6), lock washer (7) and nut (8) (against the heat shield). **NOTE: Align bracket approximate to edge of heat shield, as shown.**

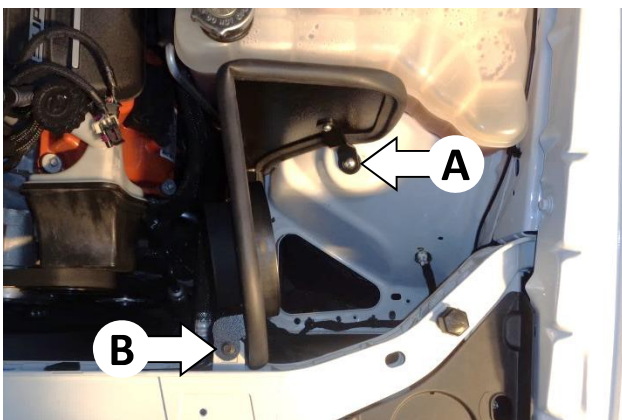




12. Attach gasket (24) to heat shield. Starting at the corner shown, firmly press the gasket onto the edge, gradually working around the heat shield. When you return to the starting point, trim the gasket to fit using metal-cutting shears.



13. Attach rubber well nut (4) to bracket with  $\frac{3}{8}$ -16 screw (11), hand tight only.



14. Place assembled heat shield in the vehicle. If required, adjust alignment of brackets and retighten their fasteners. Tighten  $\frac{3}{8}$ -16 screw in rubber well nut (A), and secure front bracket (B) with **stock screw removed at Step 6**.



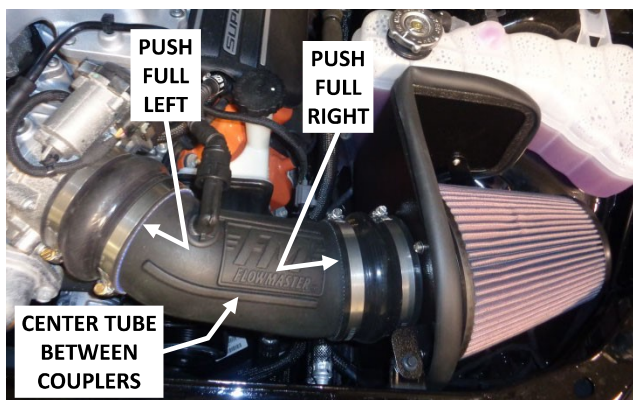
15. Insert rubber grommets (19) and (20) in the intake tube (18). Carefully press the air temp sensor into the small grommet, ensuring that the tab points downstream. (NOTE: Moistening the grommet with soapy water will ease insertion.)



16. Install two small hose clamps (21) on small flex coupler (22), and install coupler on discharge end of intake tube. Install two large hose clamps (16) on large flex coupler (17), and install coupler on intake end of tube.



17. Install the intake tube in the vehicle. Carefully press the crankcase vent hose into the large grommet. (NOTE: Moistening the grommet with soapy water will ease insertion.) Then reconnect the air temp sensor plug.

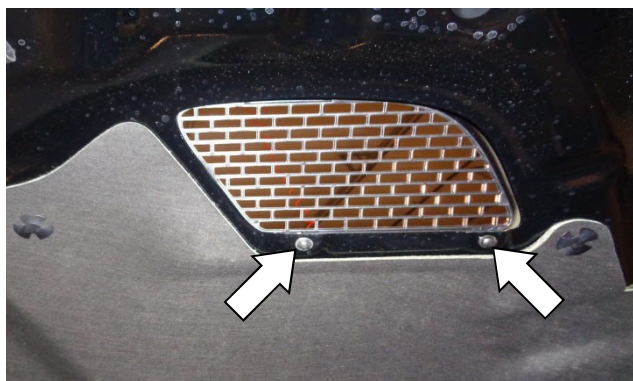


18. Push small coupler up against throttle body stops, and tighten throttle body clamp. Push large coupler up against heat shield, and tighten heat shield clamp. Then center the intake tube between the couplers, and tighten the tube clamps. Install air filter (1) with clamp (2).

**Congratulations, the installation of your FLOWMASTER performance air intake kit is now complete!**

#### NOTE

Due to exposure of the air filter to the elements via the hood intake grille, take care to protect the filter when washing the vehicle or driving in wet weather.



19. If the vehicle is to be driven in wet weather, use of the intake block-off plate (23) is recommended, to protect the air filter from exposure to excess water. Remove the two screws that secure the factory vent grille.



20. Install the block-off plate using the two stock screws. **CAUTION: Use only the stock screws, to avoid damaging the hood.**

#### FILTER MAINTENANCE:

We recommend that you clean and oil your air filter at 25,000 mile intervals using **Flowmaster's Filter Refresh Kit (PN 615001)**. See our website or your Flowmaster distributor for details.

**IMPORTANT: RETAIN THESE INSTRUCTIONS FOR FUTURE REFERENCE**

