



Installation Instructions
717939
1999-04 GRAND CHEROKEE
4.0L & 4.7L ENGINE
2/4 WD & Wheelbases

OVERVIEW:

1. Take a moment to read and understand these instructions before installing your Flowmaster performance system.

NOTE: Please inventory all parts now before continuing and if necessary, report any missing items to our tech line. This will avoid potentially stranding your vehicle until any missing replacement parts arrive.

ITM #	PART #	DESCRIPTION	QTY.
1	TB542M	Adapter Pipe	1
2	TB544M	Adapter Pipe	1
3	71226-Z	Muffler	1
4	86655M	Tailpipe Assembly	1
N/A	PK615	Hardware Package includes:	1
5	MC225BS	2¼" Stainless Band Clamp	1
6	MC250BS	2½" Stainless Band Clamp	3

REMOVE STOCK EXHAUST SYSTEM:

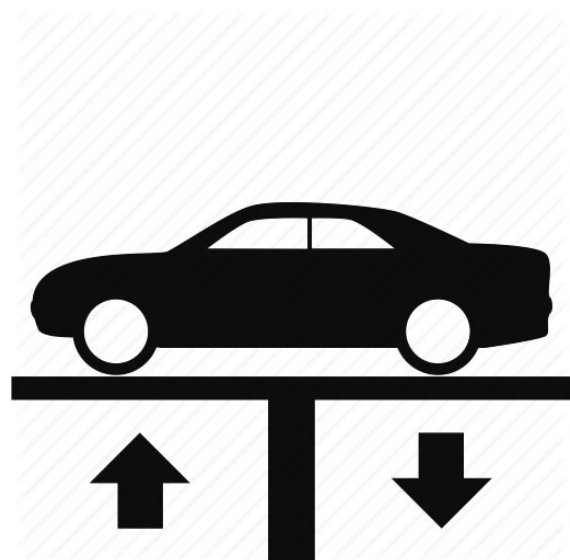
2. Raise vehicle up on a hoist or rack to working height. If you don't have access to a hoist or rack, support vehicle with jack stands.

WARNING:

Avoid serious burns! Allow your vehicle time to cool completely before touching any factory engine components.

To ease preparation and installation of your new kit:

- Apply penetrating lubricant to mounts, bolts and clamps before you remove them.
- Use stands as necessary to support parts as you detach them from your vehicle and again as you install new parts.



3. Cut tailpipe at muffler exit, separate hanger wire from isolator and remove tailpipe section. Remove muffler clamp at catalytic converter connection then remove muffler assembly from vehicle.



INSTALL FLOWMASTER EXHAUST SYSTEM:

4. Remove nuts from stock and Flowmaster clamps, apply anti-seize compound to bolts and re-install nuts. Measure your factory converter outlet in preparation for step 5.

NOTE: The image in this step is intended for illustrative purposes only and may or may not accurately reflect components included in your kit.

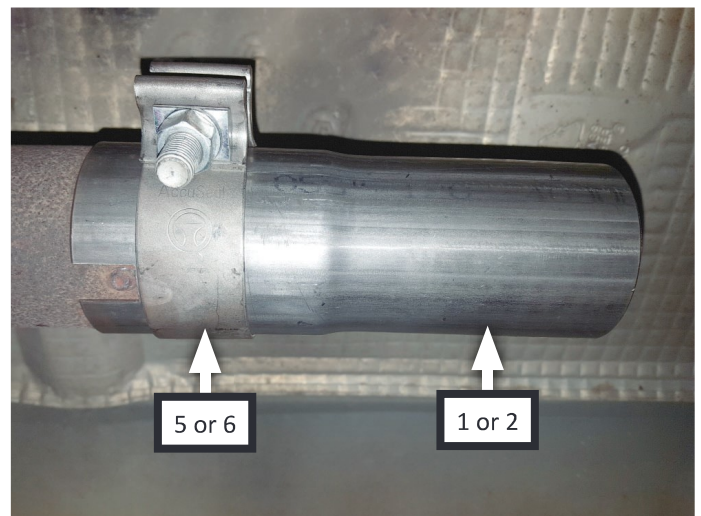
5. Every slip fit connection in this kit must seat 3" deep except for muffler connections which must seat 2" deep. Find all slip fit components in your kit and mark them accordingly so your Flowmaster exhaust system fits properly onto your vehicle.



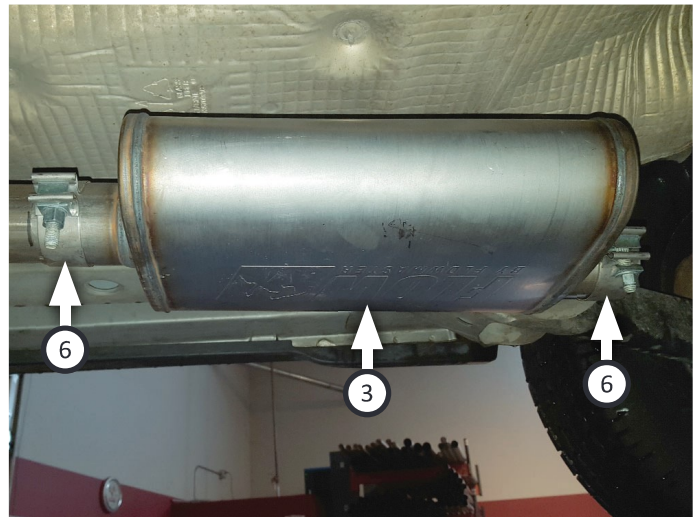
6. If your converter outlet is 2¼": Place **clamp (5)** onto **adapter pipe (1)** then connect it to catalytic converter.

If your converter outlet is 2½": Place **clamp (6)** onto **adapter pipe (2)** then connect it to catalytic converter.

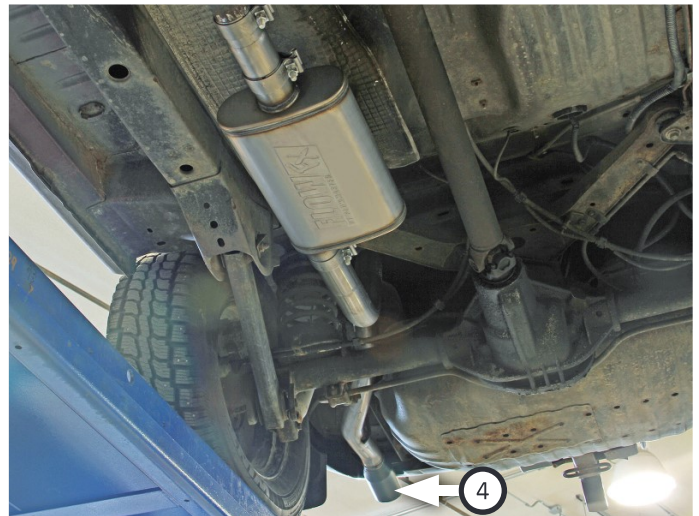
NOTE: Make sure to align square notch in pipe with tab on catalytic converter.



- Place **clamp (6)** onto **muffler (3)** then connect it to adapter pipe, oriented as shown. Tighten clamp just enough to allow for later adjustment then place another **clamp (6)** onto muffler outlet.



- Route **tailpipe (4)** over axle and connect it to muffler. Insert wire hanger into isolators then tighten clamp just enough to allow for adjustment.
- Adjust exhaust components for fit; maintaining $\frac{1}{2}$ " clearance and compensating for suspension, travel and vibration, then tighten all clamps.
- Recommended: Secure slip-fit connections with a 1-inch tack weld then spray high-temp paint over each weld to prevent rust and premature corrosion.



Congratulations, the installation of your FLOWMASTER performance exhaust system is now complete!





Installation Diagram
717939
1999-04 GRAND CHEROKEE
4.0L & 4.7L ENGINE
2/4 WD & Wheelbases

