



Installation Instructions  
**717946**  
 1994-02 RAM 1500/2500/3500  
 3.9L, 5.2L & 5.9L ENGINE  
 2/4 Wheel Drive & All Wheelbases

**OVERVIEW:**

1. Take a moment to read and understand these instructions before installing your Flowmaster performance system.

**NOTE:** Please inventory all parts now before continuing and if necessary, report any missing items to our tech line. This will avoid potentially stranding your vehicle until any missing replacement parts arrive.

ITM #	PART #	DESCRIPTION	QTY.
1	TB230M	Adapter Pipe	1
2	86093M	Extension Pipe	1
3	72288-Z	FlowFX Muffler	1
4	16124M	Left Rear Tailpipe	1
5	16127M	Right Tailpipe	1
6	16128M	Left Front Tailpipe	1
7	16317M	Side Exit Pipe	2
8	ST507B	Tip	2

ITM #	PART #	DESCRIPTION	QTY.
N/A	PK1044	Hardware Package includes:	1
9	522HA	Front Hanger	1
10	465HA	Front Hanger	1
11	391HA	Clamp Hanger	2
12	208HA	Rear Hanger	2
13	211HA	Rear Hanger	1
14	MC250BS	2½" Stainless Band Clamp	5
15	MC300BS	3" Stainless Band Clamp	1
16	HA168	Red Rubber Hanger	2
17	HW204	⅝" x 1" Bolt	2
18	HW102	⅝" Nut	2
19	HW308	⅝" Lock Washer	2
20	HW202	¼" x 1" Bolt	2
21	HW306	¼" Split Lock Washer	2
22	HW101	¼" Nut	2
23	HW502	⅝" Hanger Keeper	8
24	HW216	⅝" x 1¾" Shoulder Bolt	2
25	HW303	⅝" Flat Washer	2

**REMOVE STOCK EXHAUST SYSTEM:**

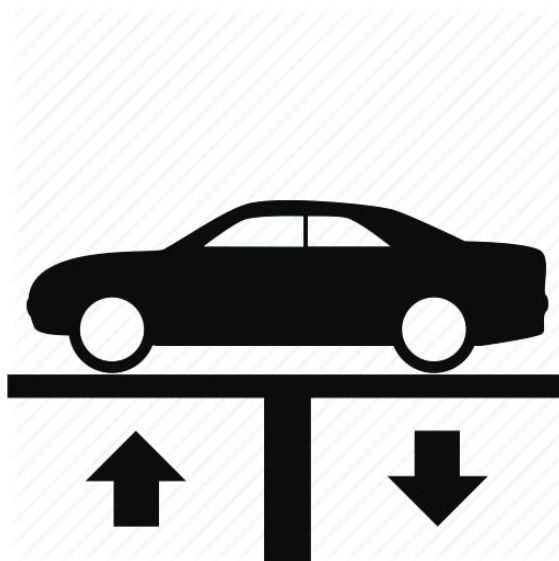
2. Raise vehicle up on a hoist or rack to working height. If you don't have access to a hoist or rack, support vehicle with jack stands.

**WARNING:**

Avoid serious burns! Allow your vehicle time to cool completely before touching any factory engine components.

**To ease preparation and installation of your new kit:**

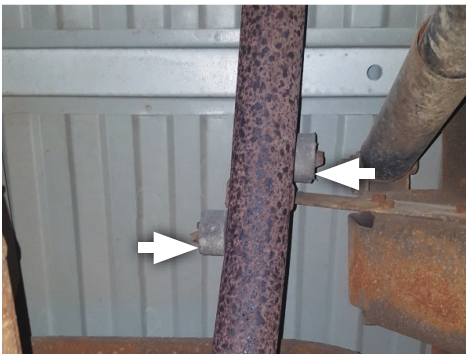
- Apply penetrating lubricant to mounts, bolts and clamps before you remove them.
- Use stands as necessary to support parts as you detach them from your vehicle and again as you install new parts.



3. Using a hacksaw or sawsall, cut stock tailpipe off where it exits muffler.



4. Separate wire hangers from isolators behind muffler. Remove bolt and hanger connecting stock tailpipe to vehicle frame (as shown, depending on your application). Remove tailpipe section from vehicle.



5. Remove clamp on muffler inlet, then remove muffler and set aside.

**NOTE:** Because connection may be significantly crimped by clamp, it may be necessary to heat it for ease of removal. If this does not work, use a hacksaw or sawsall to cut muffler off right after inlet pipe hydrosizes, then remove excess.

