



# Installation Instructions

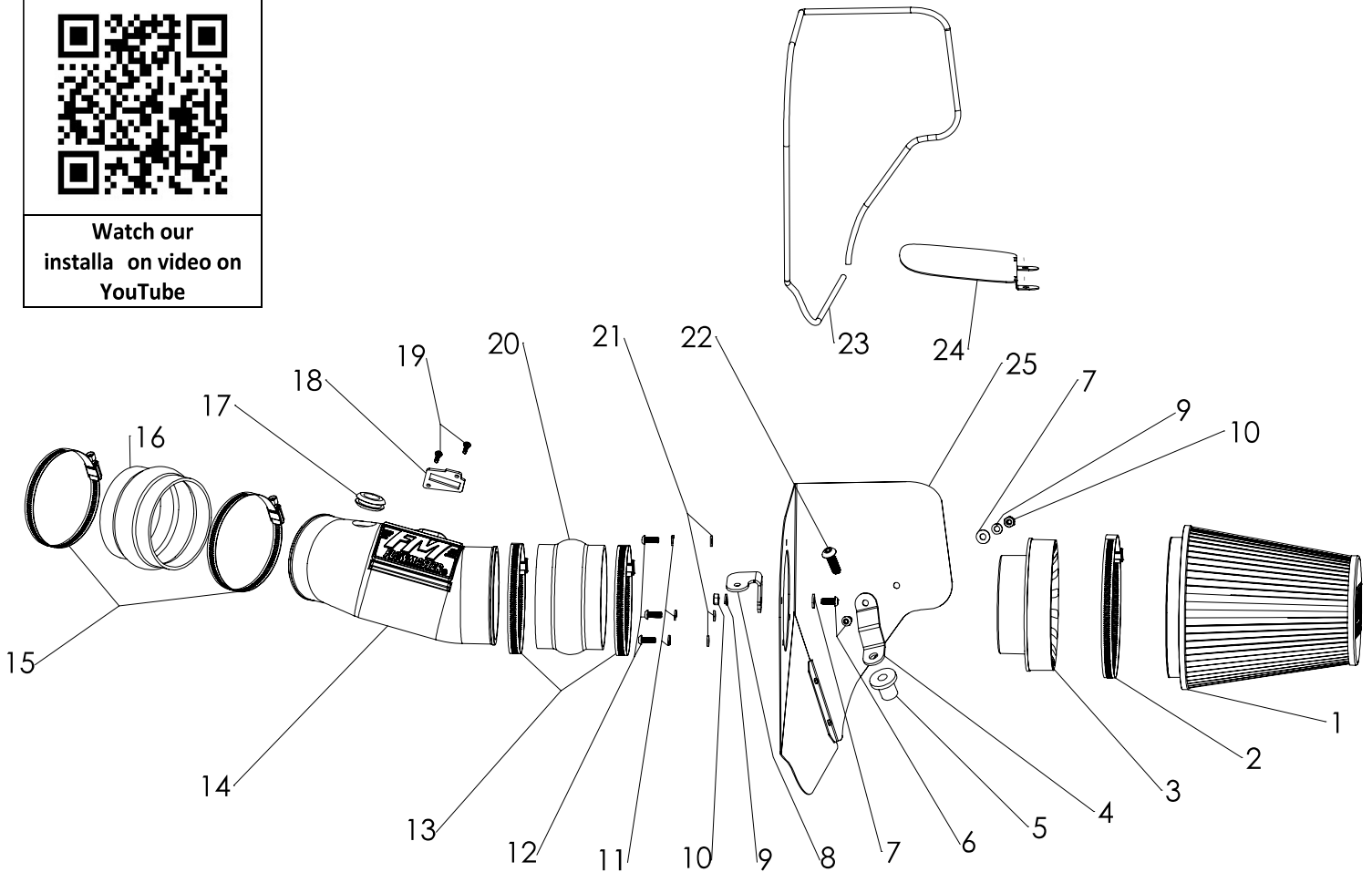
## 615145

### 2015-16 DODGE CHALLENGER & CHARGER 6.2L ENGINE

NOT LEGAL FOR SALE OR USE ON ANY POLLUTION-CONTROLLED MOTOR VEHICLE IN CALIFORNIA OR IN STATES THAT HAVE ADOPTED CALIFORNIA EMISSION PROCEDURES.



Watch our  
installa on video on  
YouTube



Rev. 2/4/2020

ITEM NO.	PART NUMBER	DESCRIPTION	QTY.
1	AF1001	FILTER, AIR 8.625" HIGH, Ø6" FLANGE	1
2		#104 HOSE CLAMP Ø4.125 TO 7"	1
3	AF6003	4.50" TO 6.00" AIR FILTER ADAPTER	1
4	AF5017	BRACKET 2	1
5	HW119	NUT, BRASS RIVET 3/4" OD RUBBER INSULATED	1
6	HW245	1/4"-20 X 5/8" SCREW	2
7	HW320	1/4" FLAT WASHER	2
8	AF5016	BRACKET 1	1
9	HW322	1/4" SPLIT LOCK WASHER	2
10	HW115	1/4"-20 NUT	2
11	HW318	M6 SPLIT LOCK WASHER	3
12	HW244	M6 X 1.0 X 16MM SCREW	3
13	MC450H	#72 HOSE CLAMP Ø3 TO 5"	2

ITEM NO.	PART NUMBER	DESCRIPTION	QTY.
14	AF2019	INTAKE TUBE	1
15	MC400H	#64 HOSE CLAMP Ø3 9/16 TO 4.5"	2
16	AF4005	4"ID X 3"L RUBBER COUPLER, HUMP	1
17	AF4045	RUBBER GROMMET 1.375" OD X 0.75" ID X 0.188" THK	1
18	GA139	MAF SENSOR GASKET	1
19	HW248	M4 X 0.7 X 12MM SCREW	2
20	AF4021	4.5"ID X 3"L RUBBER COUPLER, HUMP	1
21	HW319	M6 FLAT WASHER	3
22	HW250	3/8"-16 X 1.125" SCREW	1
23	49000061	HEAT SHIELD GASKET	1
24	AF5018	INTAKE BLOCK-OFF PLATE (CHALLENGER ONLY)	1
25	AF3008	HEAT SHIELD	1

## REVIEW THE INSTRUCTIONS AND VERIFY THE KIT CONTENTS:

1. Please take a moment to read and understand these instructions before installing your Flowmaster cold air intake kit.



2. Use the parts drawing and list (front page) to verify your kit's contents.

In the unlikely event that any parts are missing, please contact FLOWMASTER Technical Support for replacements.

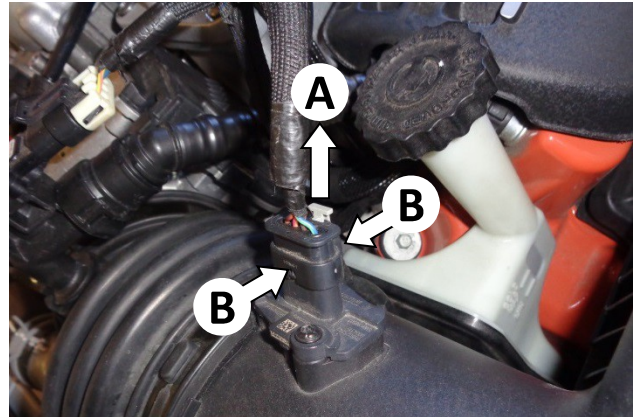
To simplify assembly and avoid cross-threading fasteners, identify and separate the 1/4-20 screws, item (6) (used with nuts (10)), and the M6 screws (12) (used with filter adapter (3)).

## REMOVE THE FACTORY AIR INTAKE SYSTEM:

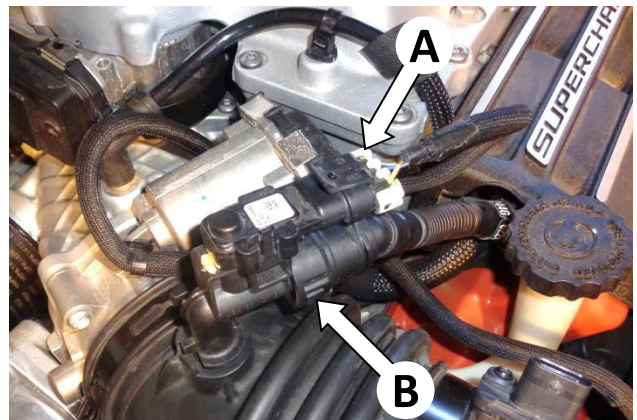
### NOTES

- We highly recommend that you retain all factory air intake system parts.
- Please refer to vehicle manufacturer's recommendations regarding removal of factory components.
- Disconnecting the negative battery cable erases pre-programmed electronic memories. Write down all memory settings before disconnecting the negative battery cable. Some radios will require an anti-theft code to be entered after the battery is reconnected. The anti-theft code is typically supplied with your owner's manual. In the event your vehicle's anti-theft code cannot be recovered, contact an authorized dealership to obtain your vehicle's anti-theft code.

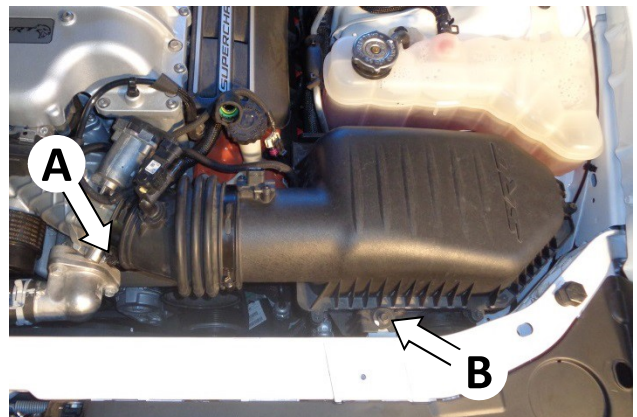
3. Turn off the vehicle's ignition and disconnect the negative battery cable.



4. Disconnect the mass airflow (MAF) sensor plug by (A) pulling its locking tab away from the sensor until it stops, then (B) squeezing the flat sides of the plug and pulling it straight off the sensor.

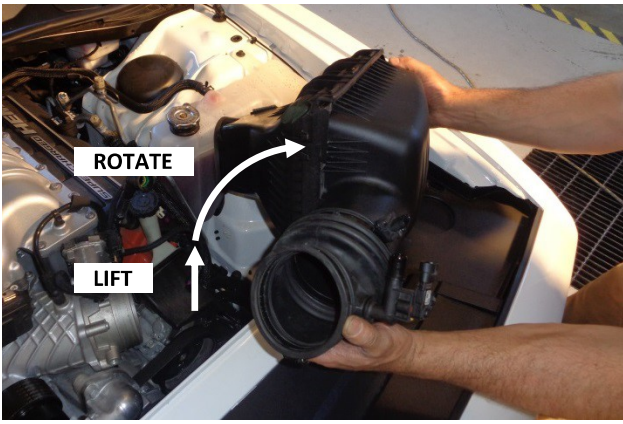


5. Disconnect the pressure sensor plug (A) and the PCV hose (B) from the fitting.



6. Loosen hose clamp (A) securing the air intake duct to the throttle body. Remove airbox mount bolt (B) and **retain for reinstallation at Step 15.**





7. Carefully remove the assembled airbox and intake duct from the vehicle by disconnecting the duct from the throttle body, lifting the airbox and duct straight up, then rotating them forward.

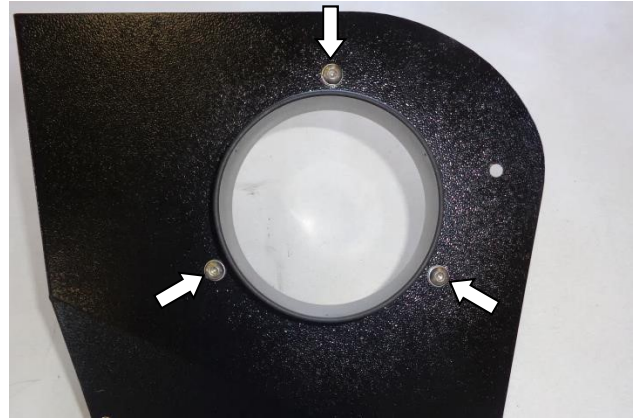


8. Remove the MAF sensor from the intake duct, then remove the stock gasket from the sensor. **CAUTION: The sensor is delicate!** Handle it with care, and store it in a safe location until reinstallation.

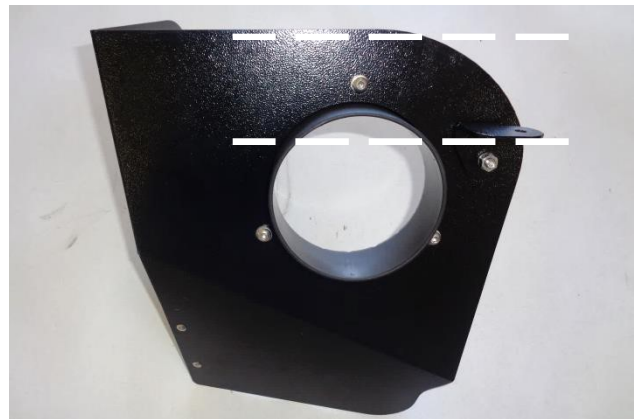


9. To remove the pressure sensor-PCV fitting, firmly grasp it and carefully wiggle it around while pulling away from the duct. (NOTE: Spraying the fitting with penetrating oil from inside the duct will aid removal.) **CAUTION: The sensor is delicate!** Handle with care, and store in a safe location until reinstallation.

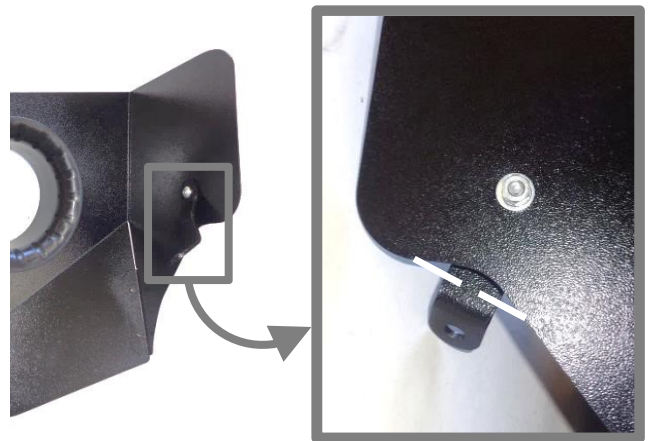
## ASSEMBLE AND INSTALL YOUR FLOWMASTER COLD AIR INTAKE SYSTEM:



10. Assemble air filter adapter (3) to heat shield (25) using M6 screws (12), lock washers (11) and flat washers (21).



11. Attach bracket (8) to heat shield using nut (10) and lock washer (9) (against the bracket) and ¼-20 screw (6) and flat washer (7) (against the heat shield). **NOTE: Align bracket so tab is approximately parallel to top edge of heat shield, as shown.**



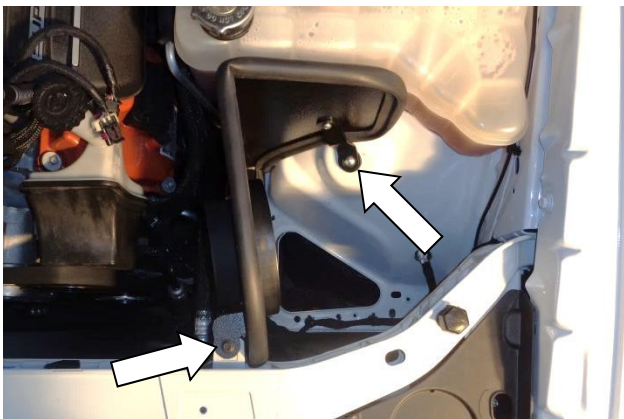
12. Attach bracket (4) to heat shield using ¼-20 screw (6) (against the bracket), and flat washer (7), lock washer (9) and nut (10) (against the heat shield). **NOTE: Align bracket to approximately edge of heat shield, as shown.**



13. Attach gasket (23) to heat shield. Starting at the corner shown, firmly press the gasket onto the edge, gradually working around the heat shield. When you return to the starting point, trim the gasket to fit using metal-cutting shears.



14. Attach rubber rivet nut (5) to bracket (4) with  $\frac{3}{8}$ -16 screw (22), hand tight only.



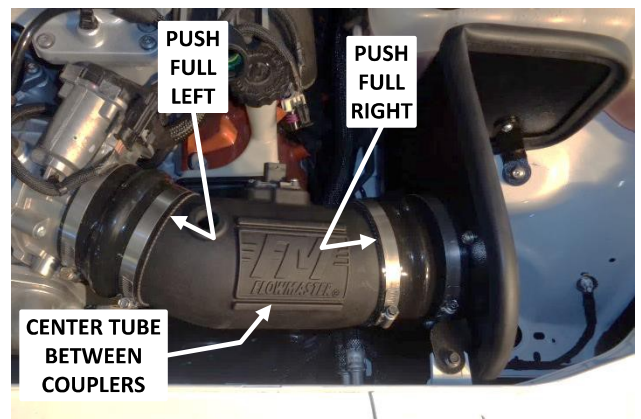
15. Place assembled heat shield in the vehicle. If required, adjust alignment of brackets and retighten their fasteners. Tighten screw (22) at rear bracket, and secure front bracket with **stock bolt removed at Step 6**.



16. Slip the MAF sensor gasket (18) over the sensor, ensuring correct orientation. Then install the sensor in intake tube (14), using M4 screws (19). Install rubber grommet (17) in intake tube.



17. Install two small hose clamps (15) on small flex coupler (16), and install coupler on discharge end of intake tube. Install two large hose clamps (13) on large flex coupler (20), and install coupler on intake end of tube.



18. Install intake tube in vehicle. Push small coupler up against raised stops on throttle body. Push large coupler up against heat shield. Then center the intake tube between the couplers, and tighten all hose clamps.





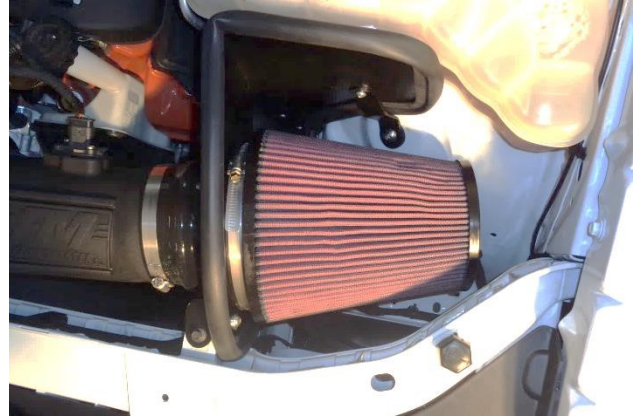
19. Carefully insert the pressure sensor-PCV fitting into the grommet, ensuring that the tab points toward the front of the vehicle. (NOTE: Moistening the grommet hole with soapy water will ease insertion.)



20. Reconnect the PCV hose to the PCV fitting, and verify the connection is secure.



21. Plug the pressure sensor connector into the sensor until it clicks. Plug the MAF sensor connector into the sensor, then press its latch toward the sensor. Verify both connections are secure.



22. Place clamp (2) on air filter (1), install filter on filter adapter and tighten clamp.

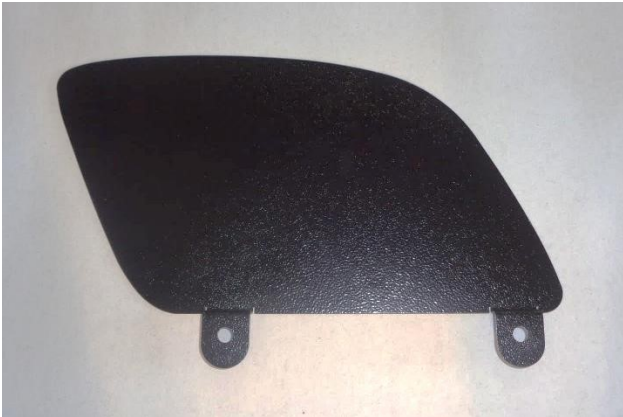


**Congratulations, the installation of your FLOWMASTER cold air intake kit is now complete!**

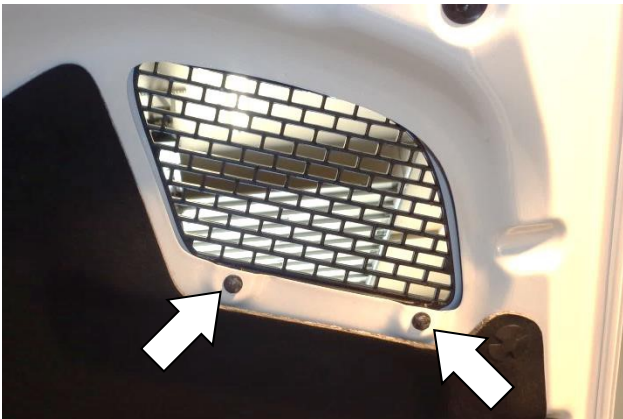
#### NOTE

Due to exposure of the air filter to the elements via the hood intake grille, take care to protect the filter when washing the vehicle or driving in wet weather (see next page).

**USE OF THE HOOD INTAKE BLOCK-OFF PLATE  
(CHALLENGER):**



If the vehicle is to be driven in wet weather, it is recommended that the hood intake block-off plate (24) be installed over the intake grille to protect the air filter from exposure to excess water.



23. Remove the two bolts that secure the factory vent grid.



24. Install the block-off plate using the two bolts.