

advanced FLOW engineering

Rapid Induction Cold Air Intake System

**Instruction Manual** P/N: 52-10002D / 52-10002R

Make: **RAM**

Model: **1500**

Year: **2019-2021**

Engine: **V6-3.6L**



- Please read the entire instruction manual before proceeding.
- Ensure all components listed are present.
- For technical support please call 951-493-7185.
- Ensure you have all necessary tools before proceeding.
- Do not attempt to work on your vehicle when the engine is hot.
- Retain factory parts for future use.

Label	Qty.	Description	Part Number
A1	1	Air Filter (Pro DRY S)	21-90108
A2	1	Air Filter (Pro 5R)	24-90108
B	1	Housing	05-5413020B2
C	1	Tube	05-5210002B1
D	1	Coupling, Silicone Reducer: (3-1/4" x 3-1/8")ID x 3"L	05-01330
E	1	Seal, Trim (32" L)	05-00072
F	1	Silicone Hose, 5/8" ID (6" L)	05-01502
G	2	Clamp, #048	03-50007
H	1	Fitting, 5/8" Barb to CCV	03-50659
I	1	Grommet	03-50167
J	1	Fitting, Air Temperature Sensor	05-01454

**Installation will require the following tools:**

8mm nut driver, 10mm deep socket and driver, 6" driver extension

**Emissions Disclaimer:** This product is not currently CARB exempt and is not available for purchase in California or for use on any vehicle registered with the California Department of Motor Vehicles.

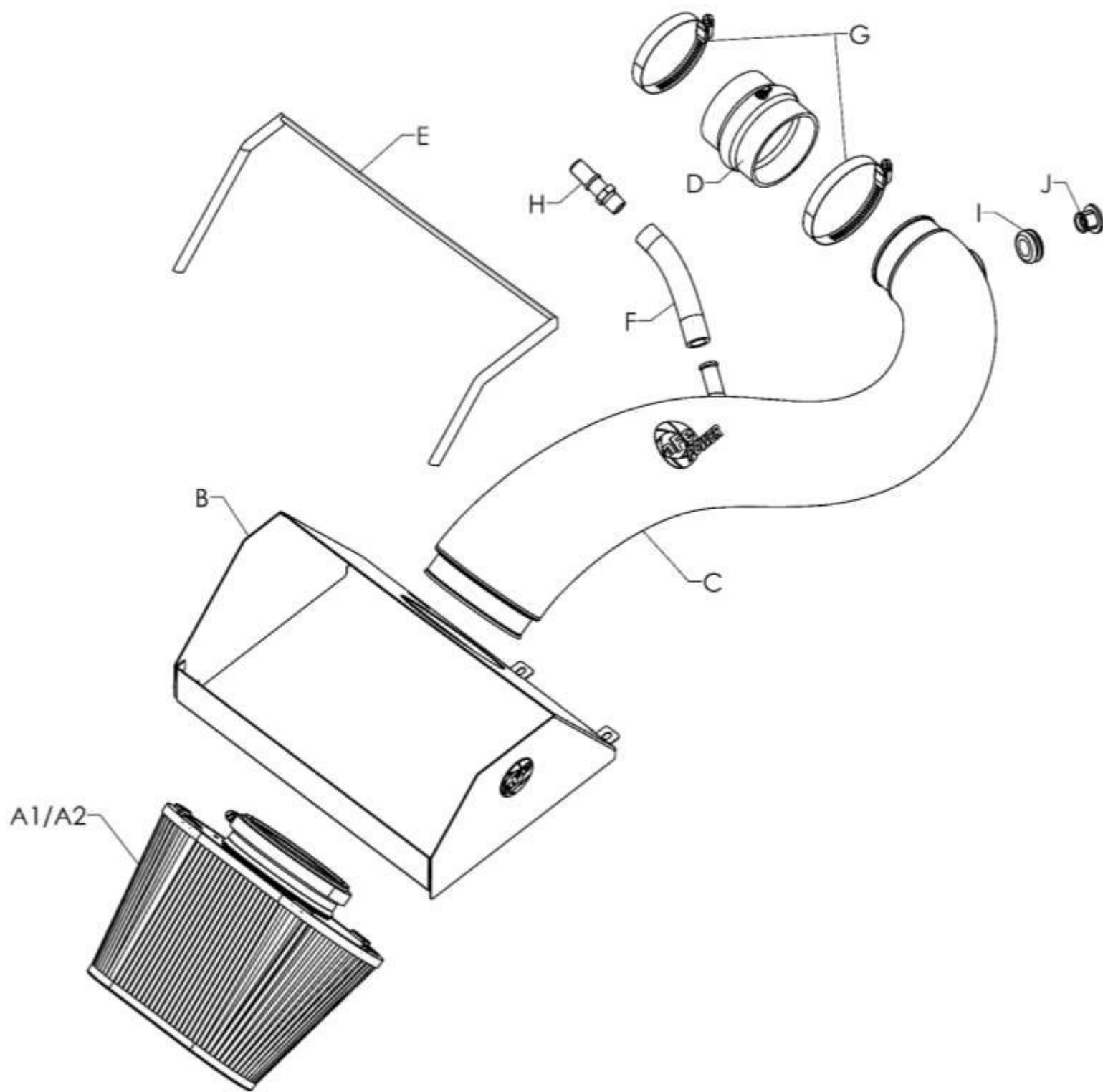




Figure A

### **Refer to Figure A for Steps 1-5**

Step 1: Using an 8mm nut driver, loosen the two clamps ① at the throttle body and factory filter housing.

Step 2: Disconnect the temperature sensor wire harness ②.

Step 3: Using a 10mm deep socket and driver, remove the nut ③ securing the factory intake tube to the valve cover and set aside.

Step 4: Disconnect the quick connect fitting ④ on the back side of the factory intake tube.

Step 5: Remove the factory intake tube from the vehicle.





**Figure B**

### **Refer to Figure B for Steps 6-7**

Step 6: Using a 10mm socket and driver with extension, remove the 6x screws ⑤ around the factory filter housing, and remove the cover.

Step 7: Remove the factory air filter.

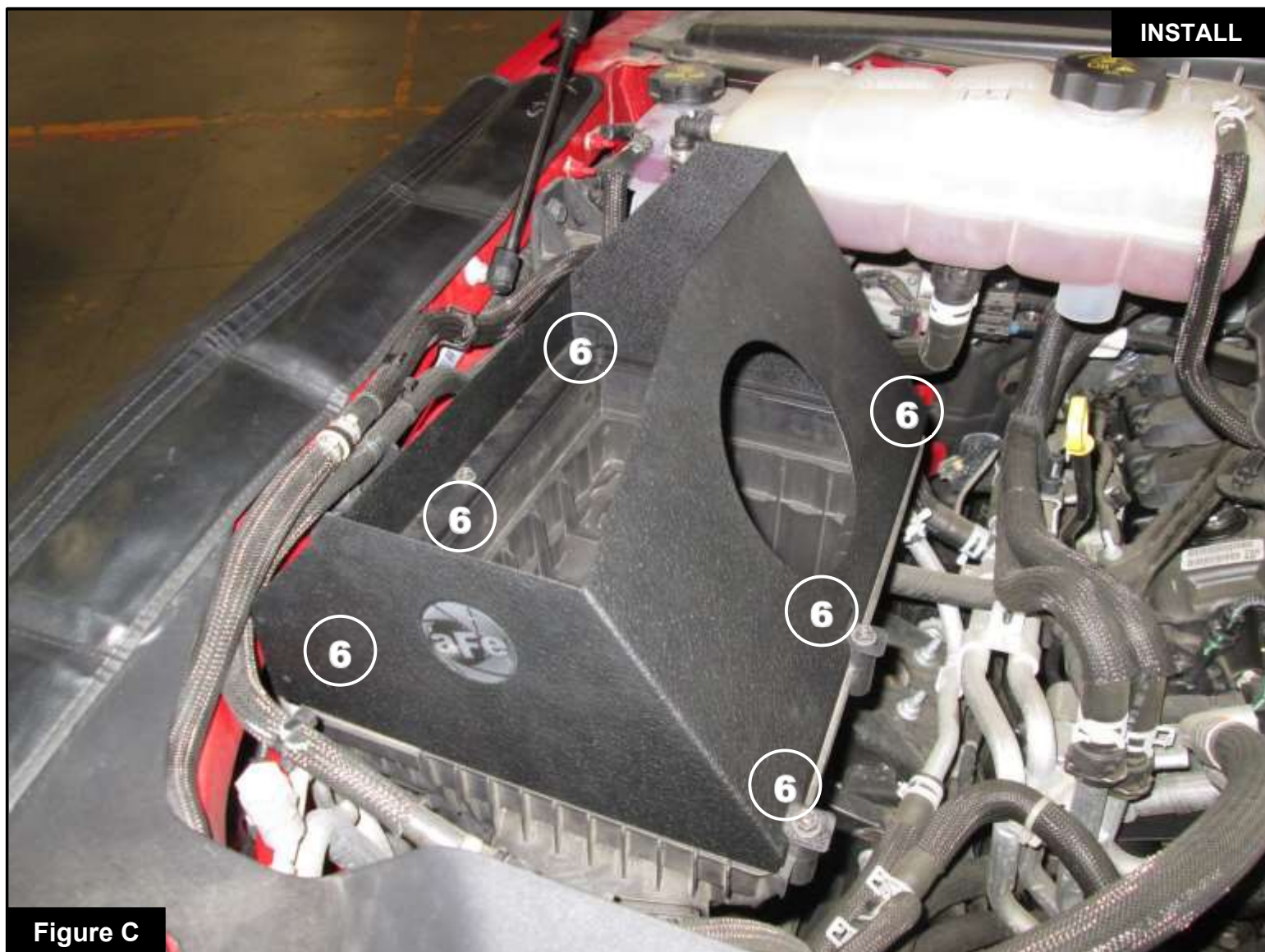


Figure C

### Refer to Figure C for Step 8

Step 8: Using the 6x screws ⑥ removed in step #6, secure your aFe POWER filter housing to the top of the factory filter housing and tighten using a 10mm socket with extension.





Figure D

### **Refer to Figure D for Step 9**

Step 9: Install your aFe POWER air filter into the filter housing by removing the clamp, then sliding the filter flange through the opening on the housing and pressing gently until the filter snaps into place. Place the filter clamp loosely on the filter flange when finished.



Figure E

## **Refer to Figure E for Step 10**

Step 10: Install the supplied silicone reducer coupler (7) and clamp (8) with the smaller end on the throttle body. Tighten the clamp using an 8mm nut driver.