

FREE SHIPPING ON ORDERS OVER \$98***INSTALL INSTRUCTIONS FOR 75-5106****PART#: 75-5106 / 75-5106D****Vehicle Application**

YEAR: 2009 - 2021

MAKE: RAM

MODEL: 1500 / 2500 / 3500

ENGINE: 5.7L Hemi

Tools Required

- 8mm, 10mm, 11mm, 13mm Wrench/Socket
- 1/16" Nut Driver or Flat Blade Screwdriver
- Phillips Screwdriver
- Panel Popper

***Note:** Approximate Install Time: 1 Hr
30 Mins.

S&B Filter Maintenance

KF-1056 Cotton Cleanable : If the enclosed filter is RED, it came pre-oiled from the factory. [Click here](#) for exact oil amount required for cleaning.

KF-1056D Dry Extendable : If the enclosed filters is WHITE, it is a disposable filter and should be discarded once it reaches capacity. This filter does not require oil.

Note: This intake kit may not fit with the following Aftermarket

Parts installed:

- Body Lift or Lowering Kit
- Custom Hood
- Throttle Body Spacer / Upgrade

CARB Status - EXEMPT

Product will be submitted to Air Resources Board for approval shortly.

Not Legal for use in CA or other states adopting CA emissions standards.

Before You Start

- Please read the entire product guide before proceeding.
- Ensure all parts are present.
- If you are missing any of the components, call our customer support at (909) 947-0015.
- Do not work on your vehicle while the engine is hot.
- Make sure the engine is turned off and the vehicle is in Park or the Parking Brake is set.

Related Products

- Cotton Cleanable Filter ([KF-1056](#))
- Dry Extendable Filter ([KF-1056D](#))
- Cleaning & Oiling Kit ([88-0008](#))
- Filter Wrap ([WF-1034](#))

Air Box Plug Testing**Performance Testing****Warning!**
 **Support**

Stock air boxes are a significant contributor to poor airflow which is why S&B designs custom air boxes with secondary and/or enlarged openings. With that said, S&B recognizes the benefits of cooler air. For optimal performance, we recommend that the intake be used without the end cap except in conditions of extreme heat.

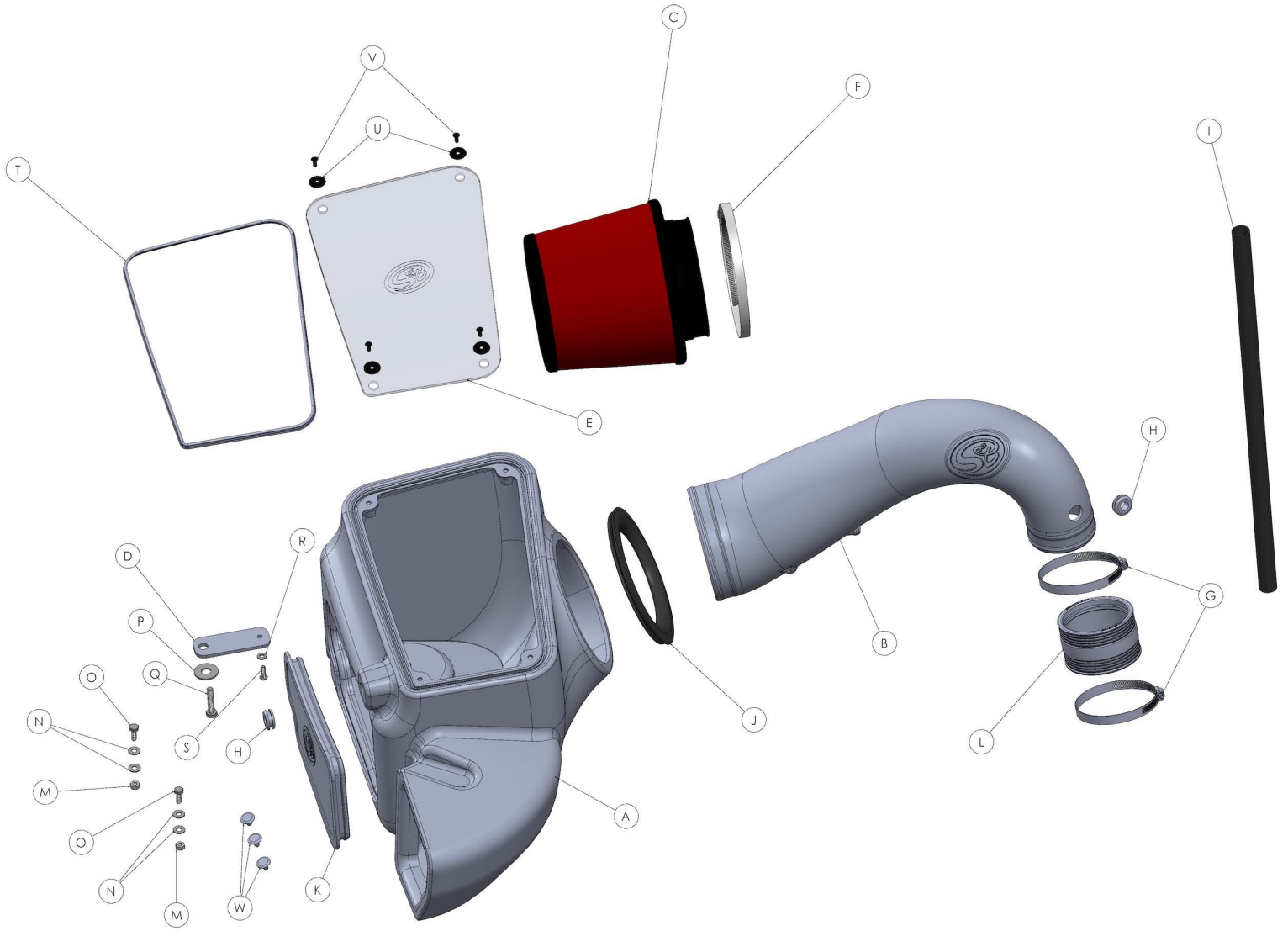
- After your installation is complete engage parking brake and start your engine. Listen for abnormal noises. If an air leak is detected, re-inspect hoses and connections as they may need to be repositioned and tightened
- S&B FILTERS recommends that you keep your OE intake system in the event it is required in the future.
- In order to maintain your warranty, all connections and components must be checked periodically for alignment and for proper tension on all connections. Failure to do so may void your warranty.
- Use only S&B FILTERS cleaning and oil products to service your filter. Using any other brand oil and or cleaners on your S&B air filter may void your warranty.

If your vehicle has a Vehicle Emission Control Information decal affixed to the factory airbox, a new replacement label must be obtained and installed in a readily visible position in the engine compartment in order to remain CARB compliant. Failure to do so will prevent the vehicle from passing a smog check. Replacement labels can be ordered from your local dealership. Regulations state that the VECI label shall not be affixed to any equipment which is easily detached from the vehicle. Label placement, under the hood on a painted surface, is recommended.

Emission Standard

The California Air Resource Board (CARB) requires that an E.O. Identification label be applied to the vehicle in order to pass a smog check inspection when a Performance Intake Kit has been installed. You must place the E.O. Label provided on or near the intake kit after installation so that a smog check technician can easily verify the E.O. Number. Check the status of the exemption process by looking up a specific part number at www.sbfilters.com. The CARB Exemption number and/or status is listed under the Product Details section for each part number. If the status shows as "Pending," CARB has yet to issue an exemption but the product has been submitted. Products that have not been issued an E.O. number are street legal in most states, but may not be used on emission controlled vehicles in the state of California and are for off-road use only. If you purchased your kit from S&B Filters directly, we will automatically mail you your Exemption Sticker when it is issued to us. If you purchased your kit from an authorized S&B Filters Dealer, log onto our web site and register to receive your Exemption Sticker.

EXPLODED VIEW



PARTS LIST

ITEM	QTY	DESCRIPTION	PART NUMBER	HARDWARE PACKS
A	1	AIR BOX	AL1309B-00	HP1507-00
B	1	INTAKE TUBE	AL1309-00	AG1008-00
C	1	AIR FILTER	KF-1056	HP1295-00
D	1	MOUNTING BRACKET	AI2009-00	AI2005-00
E	1	CLEAR LID	AI2008-00	AI2006-00
F	1	HOSE CLAMP, #104	AG1012-00	HP1246-00
G	2	HOSE CLAMP, #56	AG1008-00	AI1068-00
H	2	GROMMET	AI1563-00	AI1074-00
I	1	CCV HOSE	AI1040-06	AI1073-00
J	1	TUBE SEAL	AI1972C-00	AI1163-00
K	1	BOX PLUG	AI1947C-00	AI1080-00
L	1	COUPLER	AI1678C-00	AI1563-00
M	2	LOCKNUT, NYLOCK, 1/4-20	AI1074-00	AI1567-00
N	4	WASHER, FLAT, 1/4	AI1073-00	HP1509-00
O	2	SCREW, HEX, 1/4-20	AI1068-00	AI2009-00
P	1	WASHER, FENDER, 1-1/4	AI1080-00	AI1755-00
Q	1	SCREW, HEX, M8	AI1163-00	AI2014-00
R	1	WASHER, M6	AI1755-00	
S	1	FLANGE BOLT, HEX, M6	AI2014-00	
T	1	LID SEAL	AI1766-06	
U	4	WASHER, #10-24	AI2006-00	
V	4	SCREW, #10-24	AI2005-00	
W	3	PANEL RETAINER PIN	AI1567-00	
ITEMS NOT SHOWN IN THE EXPLODED VIEW				
X	3	ZIP TIES	AI1750-00	

AM0352-00 REV-E 08/08/2018

INSTALLATION STEPS

STEP 1

With the ignition switched off and the parking brake set, disconnect the negative battery cable on the driver's side.

IMPORTANT: Failure to disconnect the battery for a minimum of 2 hours may cause the Check Engine Light to illuminate upon completion of the installation or subsequent operation. DO NOT SKIP THIS STEP!

Tool Required: 10mm Socket/Wrench.



STEP 2

Disconnect the electrical harness at the Air Temperature Sensor.



STEP 3

Disconnect the crank case vent tube from the air box.

