



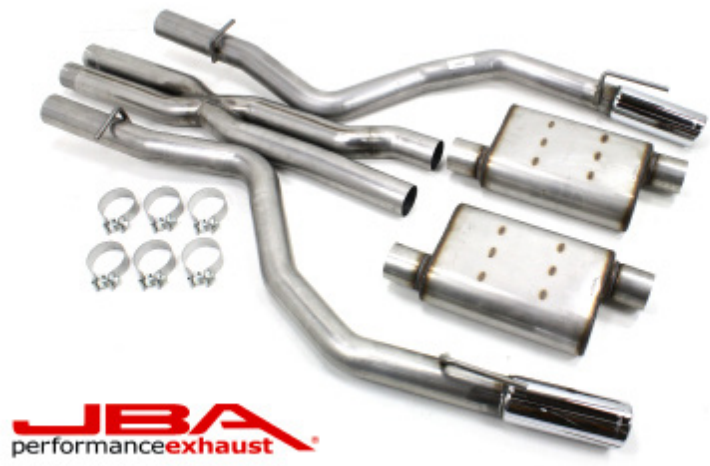
# PERFORMANCE EXHAUST

A PerTronix Performance Brand ~ [www.pertronixbrands.com](http://www.pertronixbrands.com) ~ 909 599-5955

## Installation Instructions & Warranty Information

40-1669 ~ 2015-20 Dodge Charger 6.1/6.4 SRT

Dual 3" Exit Cat Back



This product is considered a Replacement part per CARB and EPA regulations for emissions compliance and is legal for sale and use on all vehicles in all 50 states when installed according to the Manufacturer's Application Guide and Installation Instructions.

### WARNING:

This product can expose you to chemicals including Lead, Nickel, Cadmium and Chromium which are known to the State of California to cause cancer and birth defects or other reproductive harm. For more information go to [www.P65Warnings.ca.gov](http://www.P65Warnings.ca.gov)

## **PLEASE READ BEFORE PROCEEDING**

PerTronix® thanks you for choosing a JBA Performance Exhaust Product. To realize the potential of JBA's engineering and excellent fit, Please Read and Understand these instructions completely prior to starting the installation.

Check that you received all the parts listed on the parts list, if you have any concerns, please contact PerTronix before continuing.

**Work Smart – Work Safe!** Most Exhaust Installations are best performed on a lift. If a lift is not available, raise the vehicle and support on quality Jack Stands on level ground. Do not rely on a jack!

Before starting, allow the vehicle to cool, disconnect the battery, and spray penetrating oil on all hardware and fittings that will need to be removed. Silicone spray on rubber hangers will make them easier to remove and install.

1. With the vehicle raised and properly supported, unbolt the factory cross member that runs under the drive shaft and swing it out of the way.



4. Using a pry bar, pry the exhaust hangers from the rubber isolators.



5. Unbolt the driver side rear muffler / tail pipe assembly and remove it.



6. Unbolt the exhaust system from the catalytic converter assemblies.



7. Disconnect the ground strap from the exhaust system and carefully remove the exhaust system.

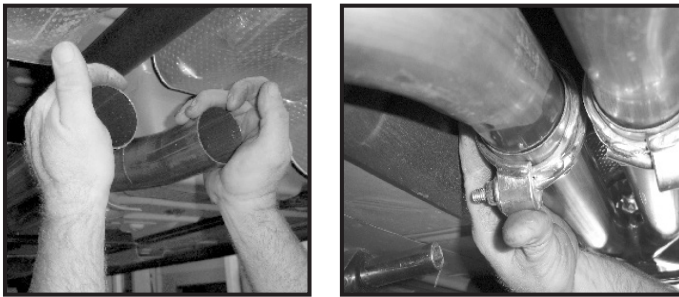
8. Slip the supplied clamps over the ends of the catalytic converter.



9. Slip the new JBA X-pipe over the end of the catalytic converter.



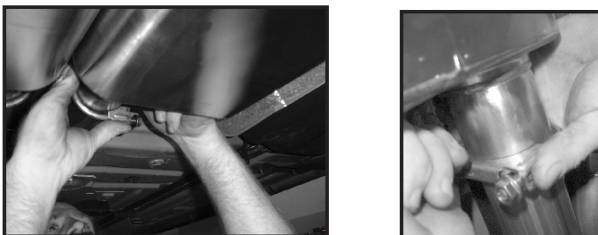
10. Align the X-pipe so that it is flat and even with the off-set exit on the passenger side. Then tighten.



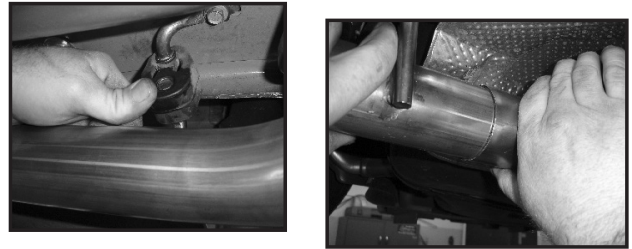
11. Slip the clamps over the end of the X-pipe. Then install the mufflers on to the end of the X-pipe.



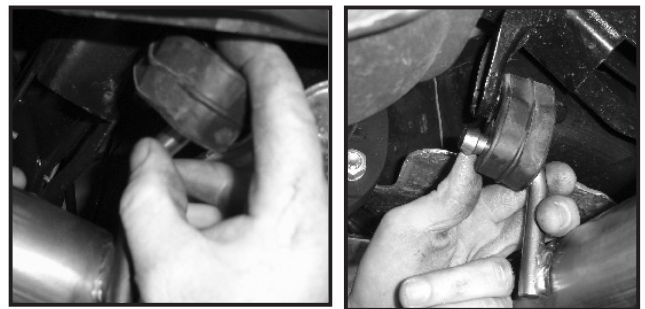
12. Align the mufflers so they are flat then tighten the clamps.



13. Install the passenger side tail pipe with tip hangers into the rubber isolators. Then slip the other end onto the muffler.



15. Install the driver side tail pipe with tip hangers into the rubber isolators. Then slip the other end onto the muffler.



16. Install the supplied clamps over the end of the mufflers .



17. Slip the tips over the tail pipes using the supplied T-Bolt clamps. Adjust for length to your liking and tighten the clamps.

18. Using a soft cloth, remove all prints from exhaust tip.

19. Check all clamps and connections for proper fit and alignment. Double check all clamps are tightened and that all hangers are secure in rubber grommets.

Parts List

1	X-pipe	2	JBA Mufflers
1	Passenger Side Tail Pipe	1	Driver Side Tail Pipe
2	Stainless Exhaust Tips	2	T-Bolt Clamps
2	2 3/4" Accu Seal Clamps	4	3" Accu Seal Clamps

**Other recommended products:**



Get an extra 20+hp and faster ET's with a set of smog legal stainless steel JBA Cat4ward® headers.

**JBA LIMITED WARRANTY**

All JBA Headers and Exhaust products are guaranteed, to the original purchaser, to be free of defects in materials and workmanship for one year. This warranty covers the replacement or repair of the product only and does not cover the cost of removal and installation, customer applied aftermarket coatings or any discoloration or corrosion of finished surfaces.

Damage or product failure resulting from collision, improper installation, off-road use, road hazards, the use of exhaust insulating wrap or like products or rust occurring after installation, is not covered by the warranty. The warranty extends only to the original purchaser.

Should a part become defective it should be returned to the original selling retailer and must be accompanied with the sales receipt. If there is no retailer in your area, call the factory for a return authorization and return your part prepaid to the factory for inspection. PerTronix reserves the rights to replace or repair the alleged defective part and return the part freight collect.