



# SPYDER<sup>TM</sup>

## SKU# 5002273



SCAN THE QR CODE TO  
VIEW THE INSTALL VIDEO

### PACKAGE CONTENTS:



• 2X TAIL LIGHT ASSEMBLIES

### FITMENT:

• 2006-2008 DODGE CHARGER

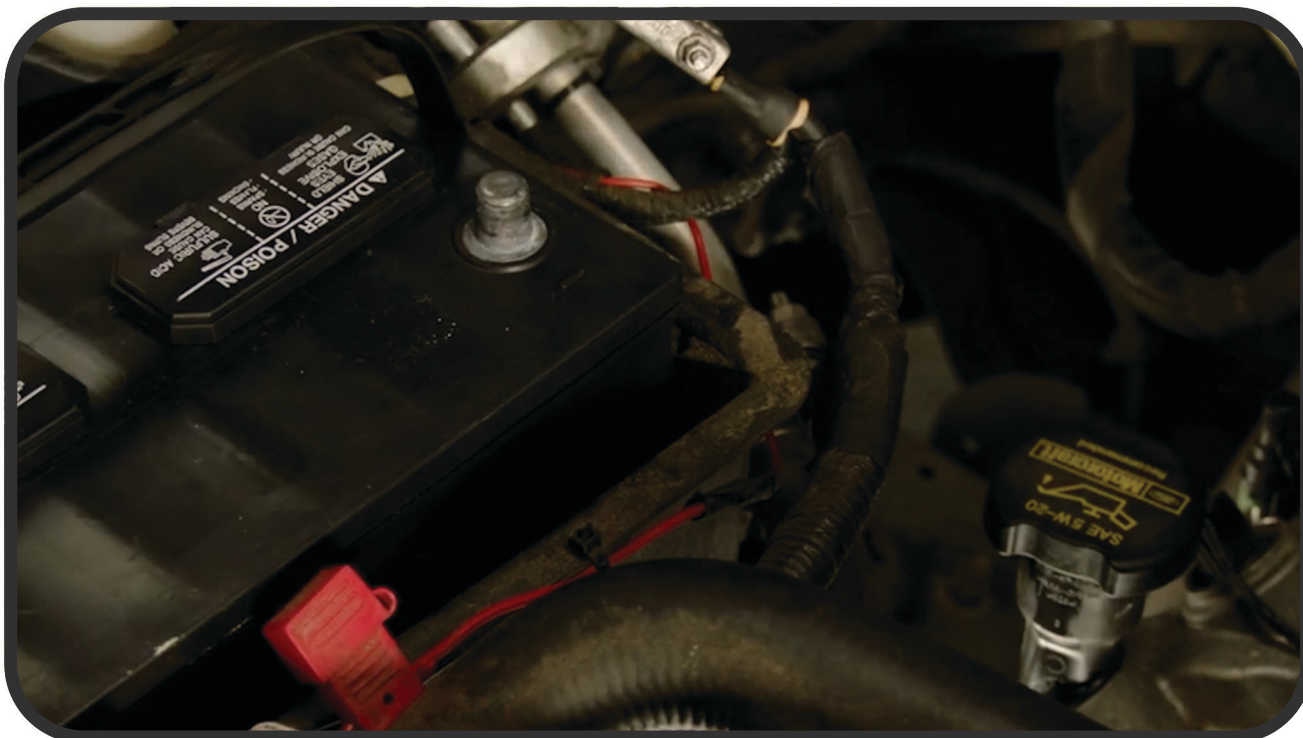
 [FACEBOOK.COM/SPYDERAUTO](https://www.facebook.com/spyderauto)  
 [LINKEDIN.COM/COMPANY/SPYDER-AUTO](https://www.linkedin.com/company/spyder-auto)  
 [INSTAGRAM.COM/SPYDERAUTO](https://www.instagram.com/spyderauto)  
 [TWITTER.COM/SPYDERAUTO](https://twitter.com/spyderauto)  
 [TIKTOK.COM/@SPYDERAUTO](https://www.tiktok.com/@spyderauto)



SCAN THE QR CODE  
TO VISIT OUR WEBSITE

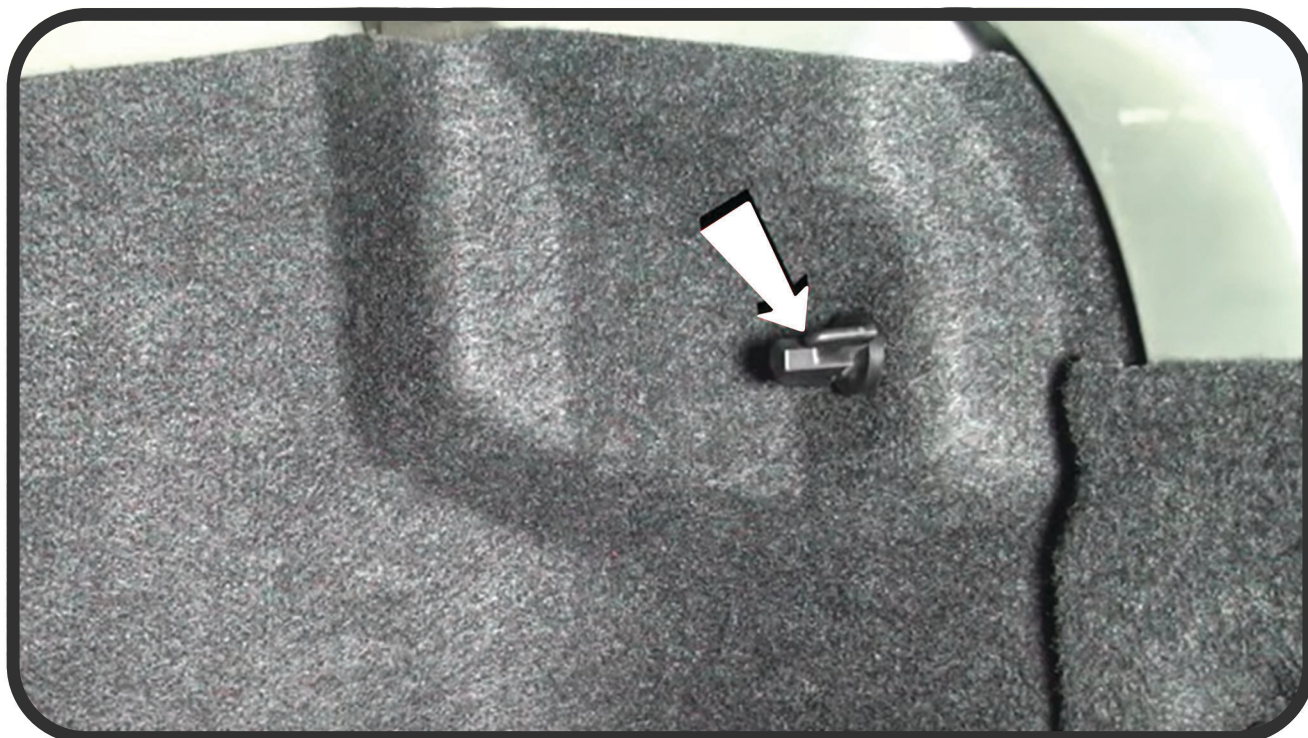
**WARNING:** BY READING THIS DOCUMENT, YOU AGREE IT IS ONLY TO BE USED AS AN EDUCATIONAL GUIDE. SPYDER AUTO NOR ITS DEALERS MAKE GUARANTEES ON ANY FINISHED RESULTS, NOR ARE THEY TO BE HELD RESPONSIBLE FOR ANY DAMAGE, MISUSE, OR PERSONAL INJURIES. IF YOU ARE UNABLE TO CLEARLY UNDERSTAND AND ADAPT THE INFORMATION BELOW, PROFESSIONAL INSTALLATION IS RECOMMENDED. FOR ANY ISSUES OR QUESTIONS ABOUT YOUR SPYDER PRODUCT, REACH OUT TO OUR TECH SUPPORT TEAM [TECHSUPPORT@SPYDERAUTO.COM](mailto:TECHSUPPORT@SPYDERAUTO.COM). IT IS THE INSTALLER'S RESPONSIBILITY TO CONFIRM COMPLIANCE WITH STATE AND LOCAL LAWS. THIS PRODUCT CAN EXPOSE YOU TO CHEMICALS INCLUDING CHROMIUM (HEXAVALENT COMPOUNDS), WHICH ARE KNOWN TO THE STATE OF CALIFORNIA TO CAUSE CANCER AND BIRTH DEFECTS OR OTHER REPRODUCTIVE HARM. FOR MORE INFORMATION GO TO [WWW.P65WARNING.CA.GOV](http://WWW.P65WARNING.CA.GOV)

**NO TOOLS REQUIRED**

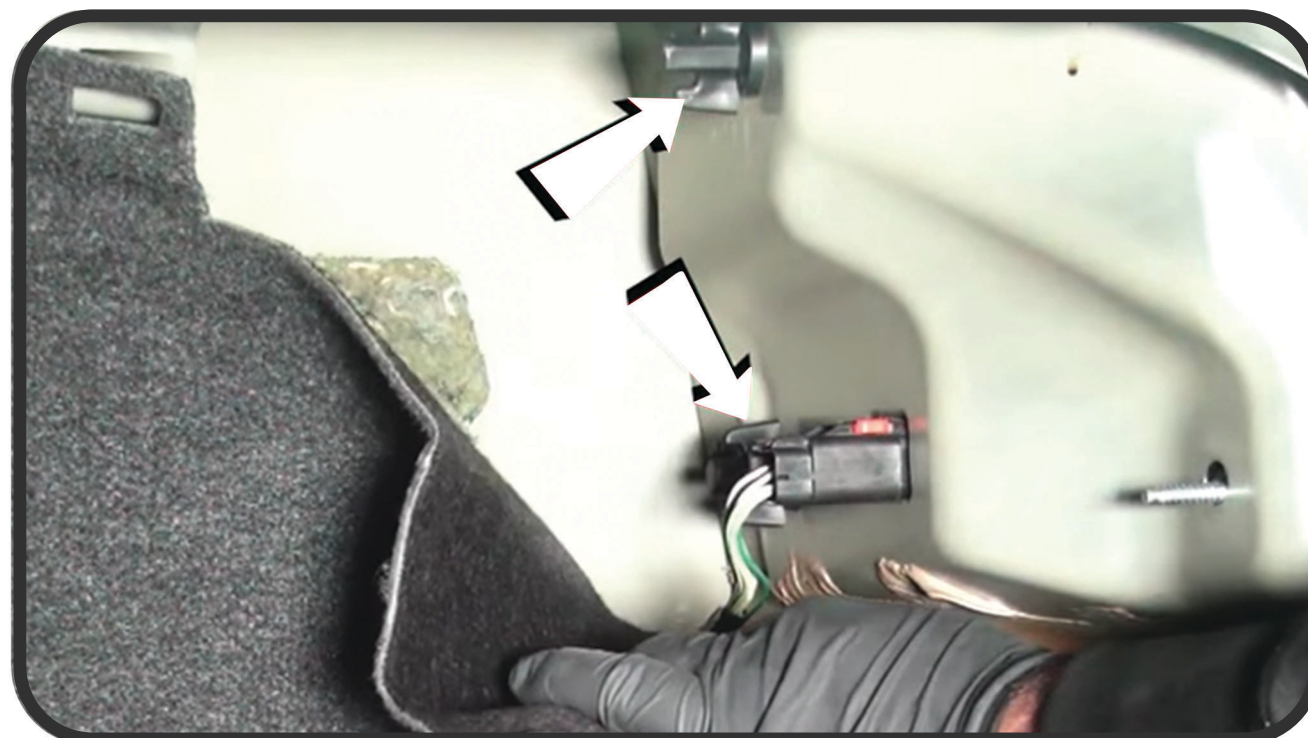


**STEP 1:**  
**DISCONNECT THE NEGATIVE BATTERY TERMINAL**

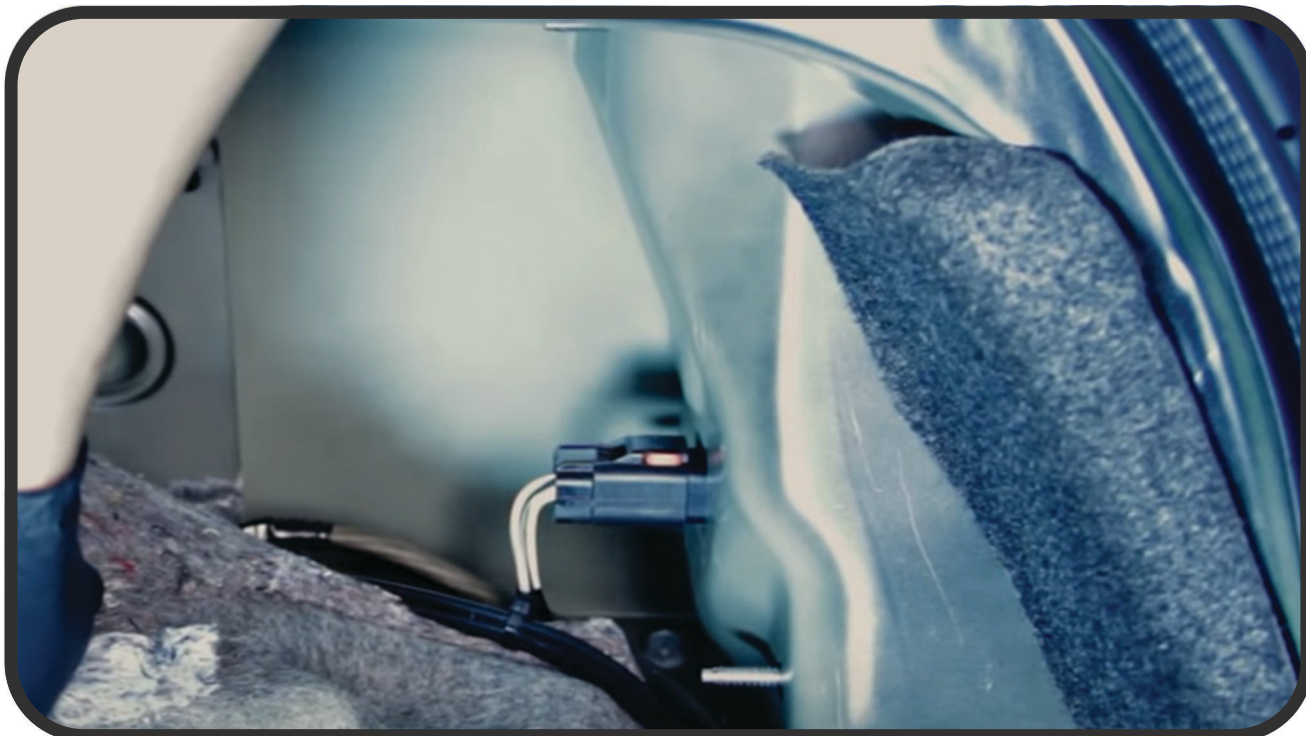




**STEP 2:**  
REMOVE (1) THUMBSCREW



**STEP 3:**  
PEEL BACK CARPET LINER AND REMOVE (2) THUMBSCREWS

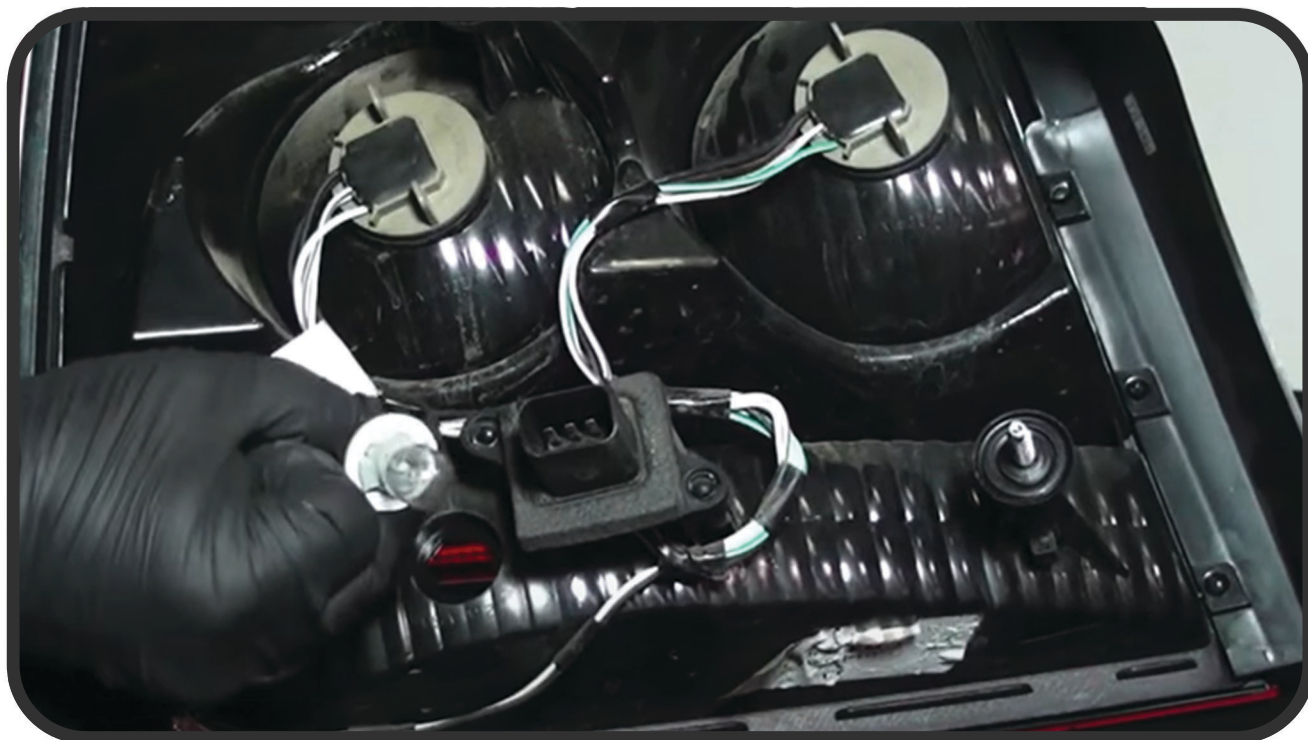


**STEP 4:**  
**DISCONNECT THE TAIL LIGHT HARNESS**

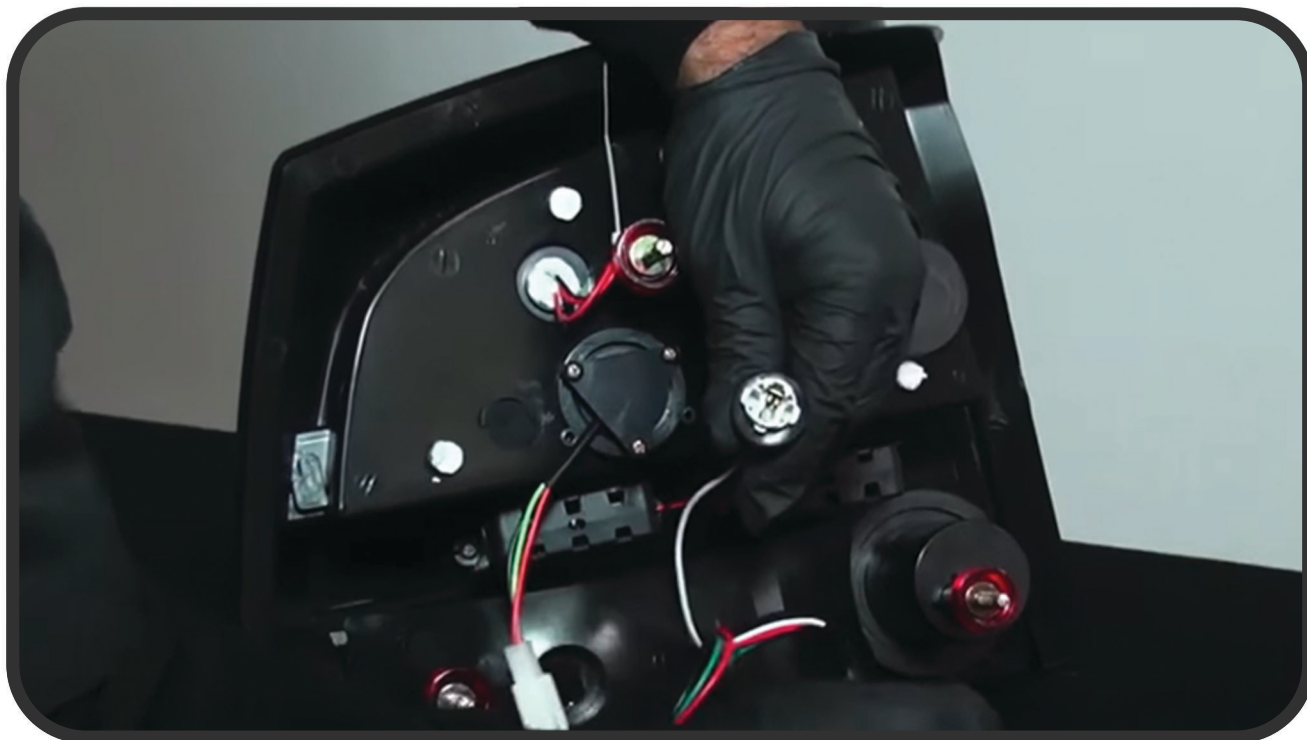


**STEP 5:**  
**UNSEAT AND REMOVE OLD TAIL LIGHT**



**STEP 6:**

**REMOVE REVERSE LIGHT SOCKET AND BULB  
(NOTE: NEVER TOUCH BULB WITH BARE HANDS)**

**STEP 7:**

**REMOVE BLACK AND WHITE WIRE BULB SOCKET FROM THE SPYDER  
TAIL LIGHT AND TRANSFER THE REVERSE BULB**



**STEP 8:**  
**CONNECT SPYDER TAIL LIGHT HARNESS**



**STEP 9:**  
**MAKE SURE TO PROPERLY SEAT WIRE HARNESS GROMMET ON  
SPYDER TAIL LIGHT BEFORE SEATING**





**STEP 10:**  
**SEAT THE SPYDER TAIL LIGHT**



**STEP 11:**  
**REINSTALL THE (2) THUMBSCREWS TO SECURE THE TAIL LIGHT**

**STEP 12:**

**REINSTALL THE THUMBSCREW SECURING THE TRUNK CARPET LINER**

**STEP 13:**

**RECONNECT THE BATTERY AND TEST THE FUNCTIONS TO ENSURE THEY FUNCTION PROPERLY**