



SPYDERTM

SKU# 5002556



SCAN THE QR CODE TO
VIEW THE INSTALL VIDEO

PACKAGE CONTENTS:



• 2X TAIL LIGHT ASSEMBLIES

FITMENT:

- 2002-2006 DODGE RAM 1500
- 2003-2006 DODGE RAM 2500/3500



FACEBOOK.COM/SPYDERAUTO



LINKEDIN.COM/COMPANY/SPYDER-AUTO



INSTAGRAM.COM/SPYDERAUTO



TWITTER.COM/SPYDERAUTO



TIKTOK.COM/@SPYDERAUTO

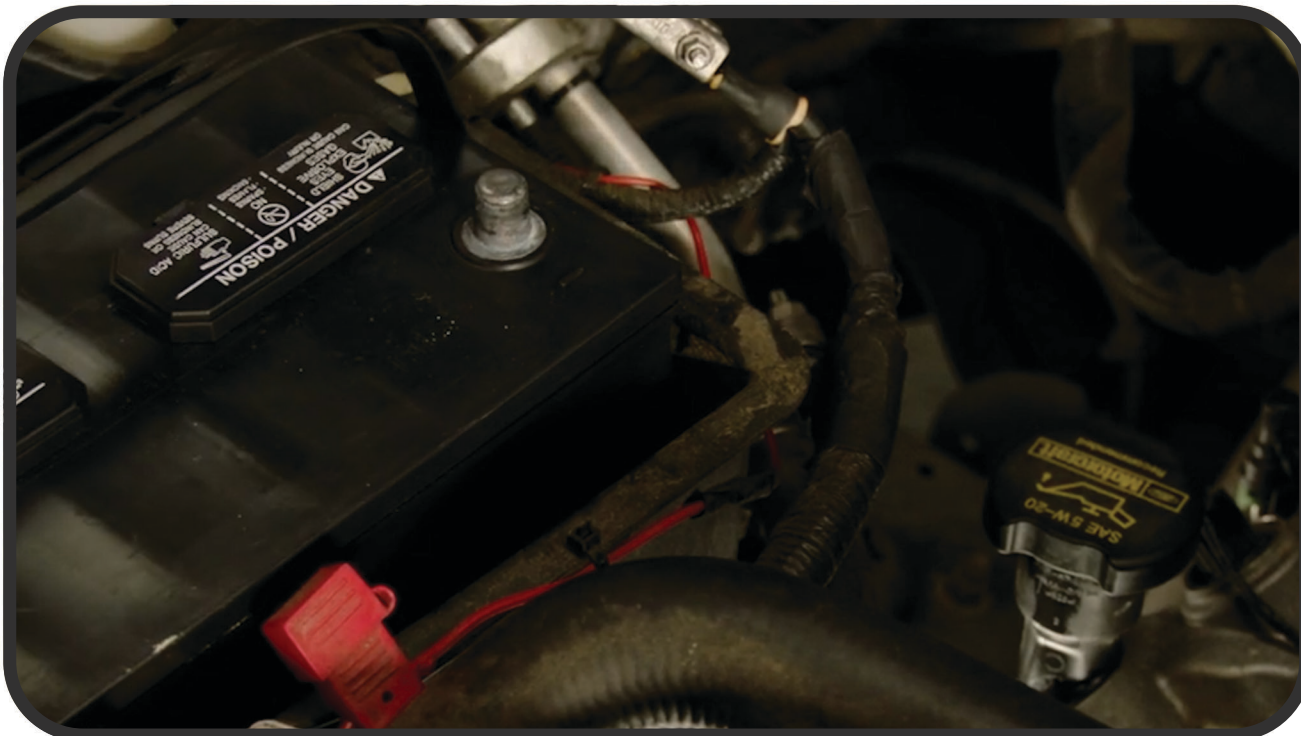


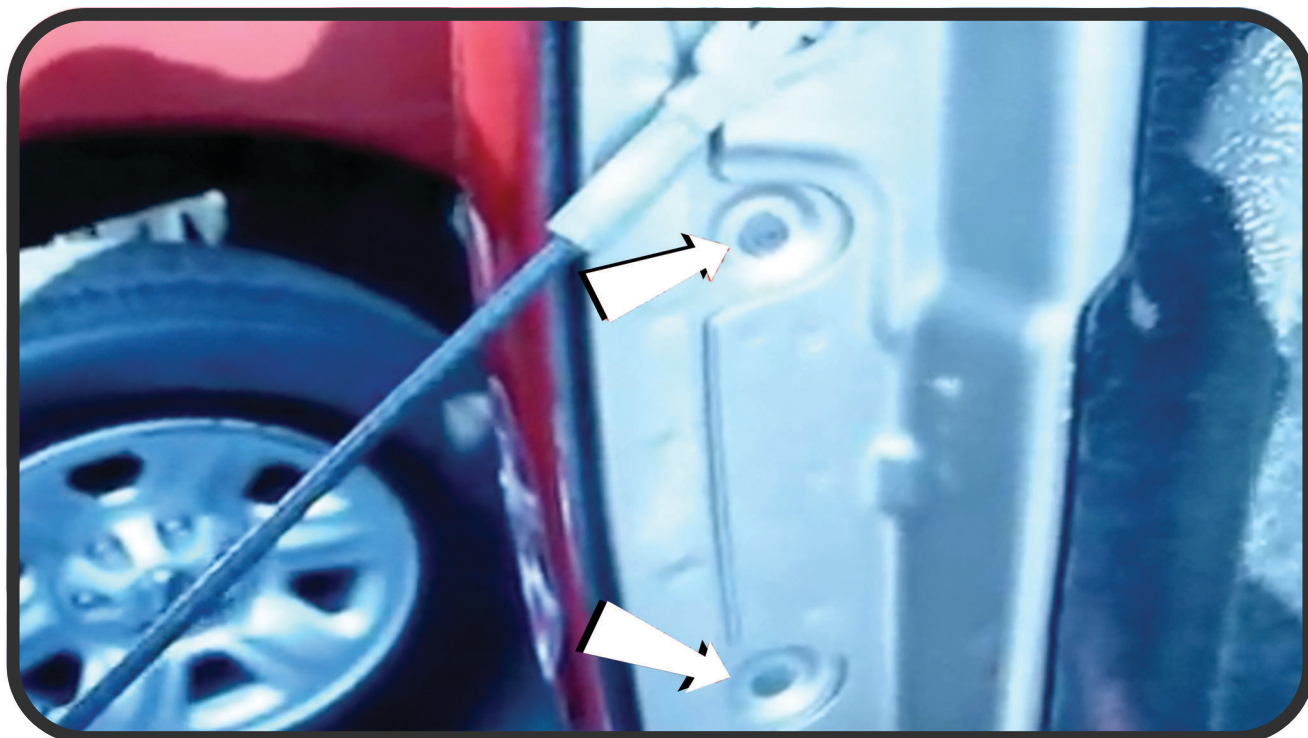
SCAN THE QR CODE
TO VISIT OUR WEBSITE

WARNING: BY READING THIS DOCUMENT, YOU AGREE IT IS ONLY TO BE USED AS AN EDUCATIONAL GUIDE. SPYDER AUTO NOR ITS DEALERS MAKE GUARANTEES ON ANY FINISHED RESULTS, NOR ARE THEY TO BE HELD RESPONSIBLE FOR ANY DAMAGE, MISUSE, OR PERSONAL INJURIES. IF YOU ARE UNABLE TO CLEARLY UNDERSTAND AND ADAPT THE INFORMATION BELOW, PROFESSIONAL INSTALLATION IS RECOMMENDED. FOR ANY ISSUES OR QUESTIONS ABOUT YOUR SPYDER PRODUCT, REACH OUT TO OUR TECH SUPPORT TEAM TECHSUPPORT@SPYDERAUTO.COM. IT IS THE INSTALLER'S RESPONSIBILITY TO CONFIRM COMPLIANCE WITH STATE AND LOCAL LAWS. THIS PRODUCT CAN EXPOSE YOU TO CHEMICALS INCLUDING CHROMIUM (HEXAVALENT COMPOUNDS), WHICH ARE KNOWN TO THE STATE OF CALIFORNIA TO CAUSE CANCER AND BIRTH DEFECTS OR OTHER REPRODUCTIVE HARM. FOR MORE INFORMATION GO TO WWW.P65WARNING.CA.GOV

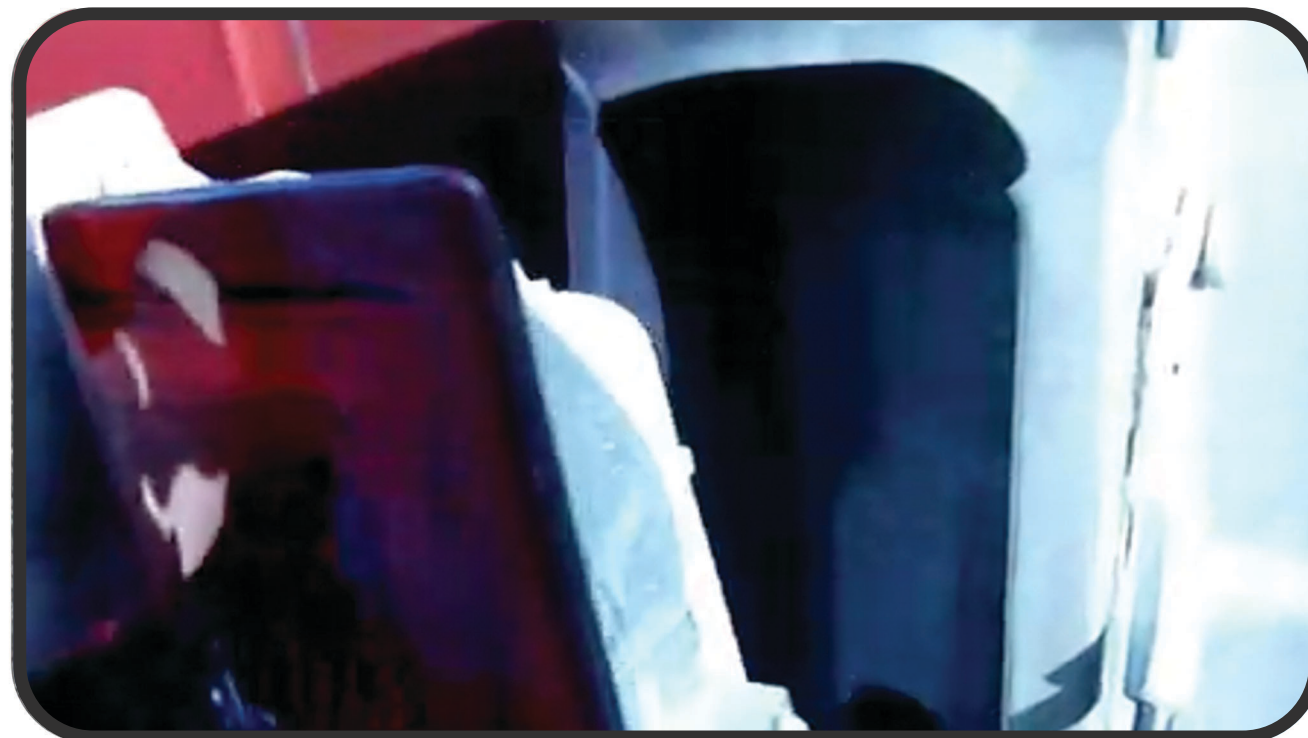
TOOLS REQUIRED:

- BIT DRIVER
- T25 TORX SOCKET

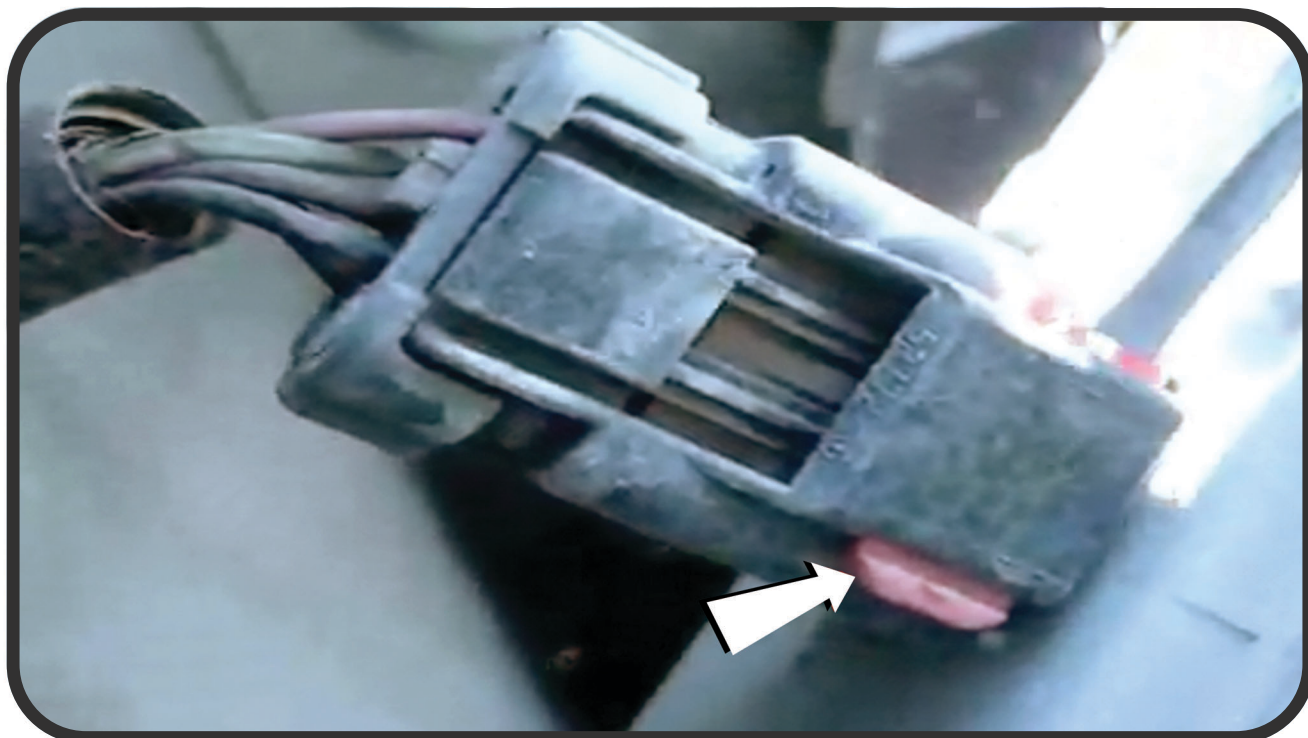

STEP 1:
DISCONNECT THE NEGATIVE BATTERY TERMINAL


STEP 2:

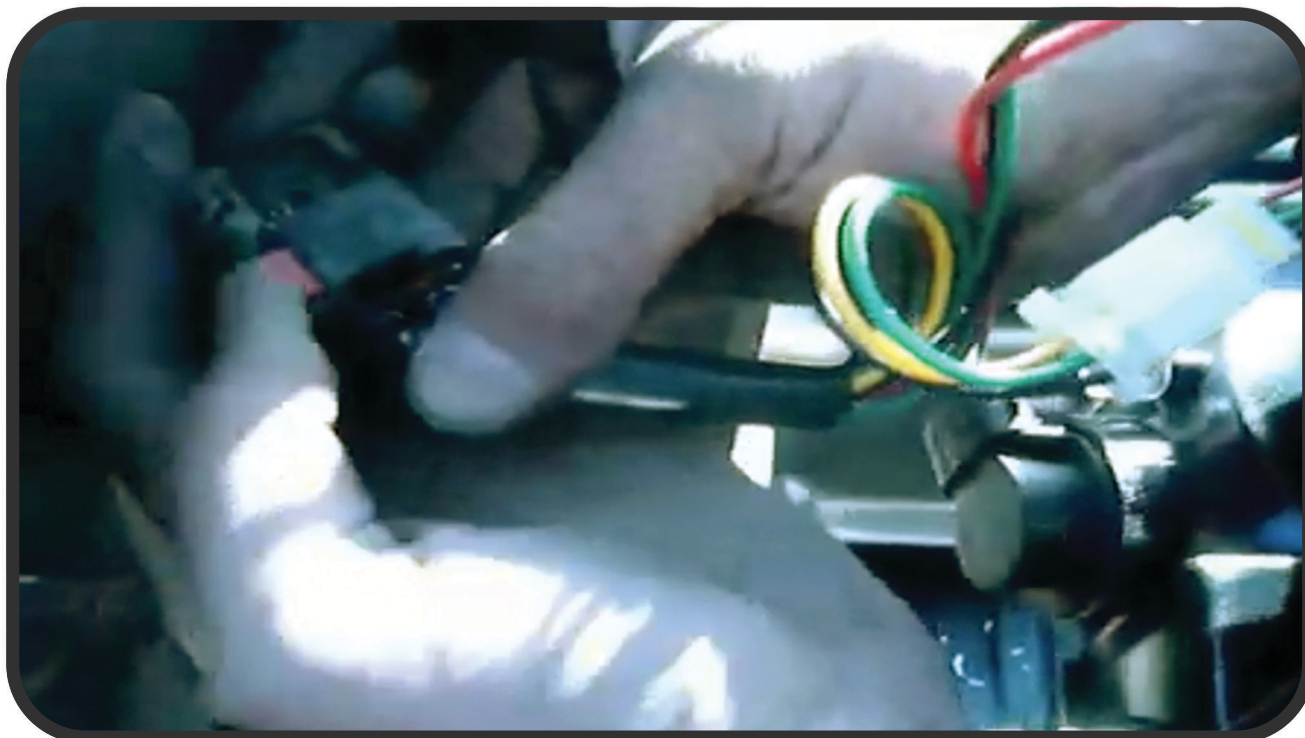
OPEN THE TAILGATE. REMOVE THE (2) T25 TORX SCREWS SECURING THE TAIL LIGHT


STEP 3:

UNSEAT THE TAIL LIGHT

**STEP 4:**

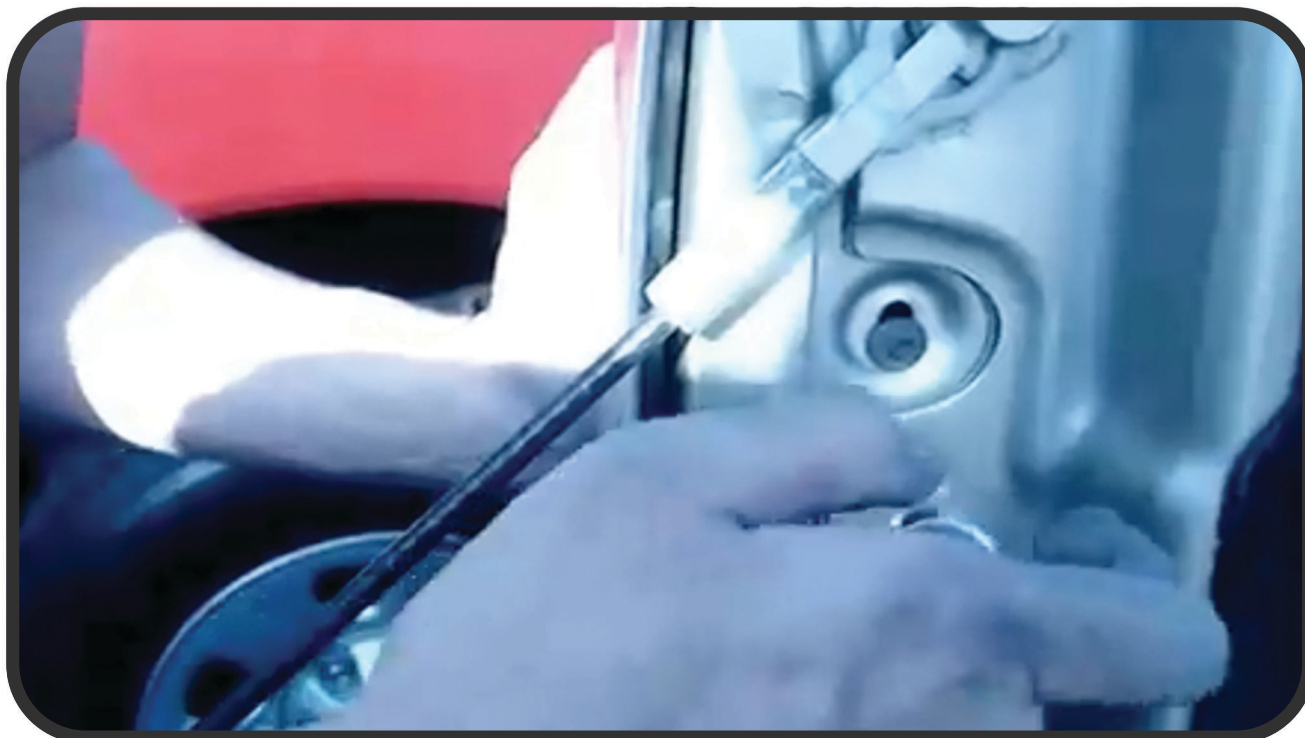
DISCONNECT THE TAIL LIGHT HARNESS BY SLIDING THE RED LOCKING TAB FREE

**STEP 5:**

CONNECT THE SPYDER TAIL LIGHT HARNESS TO THE OEM TAIL LIGHT HARNESS AND SLIDE THE LOCKING TAB



STEP 6:
SEAT THE SPYDER TAIL LIGHT



STEP 7:
REINSTALL THE (2) T25 TORX SCREWS TO SECURE THE TAIL LIGHT.
CLOSE THE TAILGATE

**STEP 8:**

RECONNECT THE BATTERY AND TEST THE FUNCTIONS TO ENSURE THEY FUNCTION PROPERLY